



Using the Cisco Navigation Bar Extension

This appendix explains how you install and use the Cisco Navigation Bar (NavBar) extension to Dreamweaver.

The Cisco Navigation Bar extension changes the behavior of the standard Dreamweaver navigation bar. With the extension, the current web page always displays the appropriate down-state button in the navigation bar. To accomplish this change, a JavaScript function `MM_nbIsActive(name)` determines if the passed image name should be shown in the down state.

The Cisco Navigation Bar extension is named `navbar.mxp` and is located in the `\install_dir\nwsp\webapp\assets` directory.

Creating a Navigation Bar



Note

If your Dreamweaver installation has not been extended for the Cisco Navigation Bar extension, you may need to install the extension for some of the following procedures. For installation directions, see the [“Installing the Navigation Bar Extension”](#) section on page C-4.

The manner in which you insert a navigation bar that uses the Cisco Navigation Bar extension varies depending on whether:

- It is a new JSP page.
- The JavaScript for the navigation bar is already on the JSP page itself.
- The JavaScript for the navigation bar is incorporated on the JSP page through an `include` directive specifying `navbar.js`.

The directions given in the following sections also apply if you want to add the navigation bar to a Dreamweaver template.



Note

After you create and insert a navigation bar that uses the Cisco Navigation Bar extension and edit the JavaScript, you cannot use Dreamweaver to modify the navigation bar (by clicking Navigation Bar from the Modify menu). Attempting to modify a navigation in this manner will corrupt the JavaScript code in the navigation bar’s anchor tags (`<a>`).

New JSP Page

If the JSP page where you will insert the navigation bar is newly created (not an existing JSP page from an SESM web application), you can add a new navigation bar that uses the Cisco Navigation Bar extension by performing the following steps:

Step 1 Insert the navigation bar in the normal manner with Dreamweaver by choosing **Interactive Images** and then **Navigation Bar** from the **Insert** menu.

Step 2 In the created JavaScript, ensure that the `MM_nbIsActive` function is defined as follows:

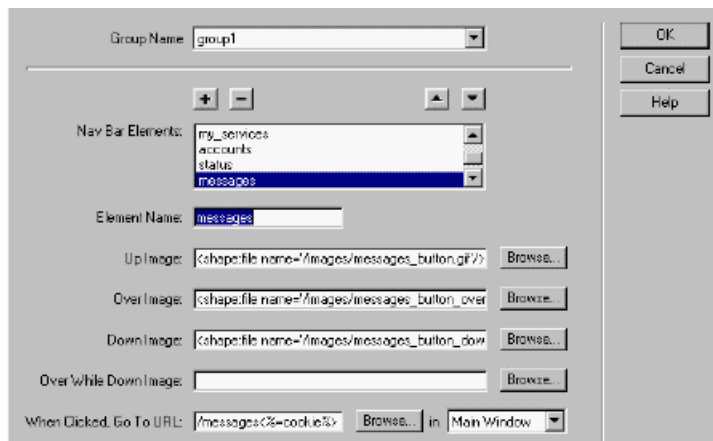
```
function MM_nbIsActive(name) { //v3.0
    return (name == '<%= selectedNavbarButton %>');
}
```

Step 3 Insert the following code above the `<head>` section of the JSP page where the navigation bar is used. The code is used by the navigation bar software to determine the button that should be in the down state on a given page.

```
<% String selectedNavbarButton = "this_element"; %>
```

In the preceding code, `this_element` is the name of an element within the Dreamweaver navigation bar. Each button in the navigation bar has an element name. For example, in the Dreamweaver Insert Navigation Bar dialog box shown in [Figure C-1](#), `messages` is the element name.

Figure C-1 Navigation Bar Element Names



The string for `this_element` is different for each JSP page and corresponds to the element name for the page's button in the navigation bar. As an example, in the NWSP web application, the element name of the button that links to the Messages web page is `messages`. In `messages.jsp`, the code would be:

```
<% String selectedNavbarButton = "messages"; %>
```

JSP Page with Existing JavaScript

If an existing JSP page where you will insert the navigation bar already contains JavaScript for a navigation bar, Dreamweaver will not insert JavaScript for a new navigation bar. In this case, to add a new navigation bar that uses the Cisco Navigation Bar extension, perform the following steps:

-
- Step 1** Copy navbar.js from the `\install_dir\nwsp\webapp\decorators` directory into the document tree of the SESM web application. The navbar.js file contains the custom JavaScript functions that the navigation bar requires.
 - Step 2** In the JSP page, delete the JavaScript for the existing navigation bar.
 - Step 3** Insert the following code into the `<head>` section of the JSP page where the navigation bar is used. (If a JSP page is derived from a template that has the code, the code is automatically copied to the JSP page when it is created.)

```
<script language="JavaScript">
<%@ include file="/location/navbar.js" %>
</script>
```

In the preceding code, `location` is the directory where navbar.js is located within the document tree of the web application. For example: `/decorators/navbar.js`.

- Step 4** In the navbar.js file, ensure that the `MM_nbIsActive` function is defined as follows:

```
function MM_nbIsActive(name) { //v3.0
    return (name == '<%= selectedNavbarButton %>');
}
```

- Step 5** Insert the following code above the `<head>` section of the JSP page where the navigation bar appears. The navigation bar software uses the code to determine the button that should be in the down state on a given page.

```
<% String selectedNavbarButton = "this_element"; %>
```

For more information on step 5, see the [“New JSP Page” section on page C-2](#).

JSP Page with Included JavaScript

If an existing JSP page where you will insert the navigation bar already has included navbar.js through the use of an `include` directive, Dreamweaver inserts the JavaScript for the new navigation bar. In this case, to add a new navigation bar that uses the Cisco Navigation Bar extension, perform the following steps:

-
- Step 1** Delete the JavaScript that Dreamweaver added for the new navigation bar. (The same JavaScript code is contained in the navbar.js file.)
 - Step 2** Ensure that the `MM_nbIsActive` function in navbar.js is defined as follows:

```
function MM_nbIsActive(name) { //v3.0
    return (name == '<%= selectedNavbarButton %>');
}
```

- Step 3** Ensure that the following code is inserted above the `<head>` section of the JSP page where the navigation bar appears. The navigation bar software uses the code to determine the button that should be in the down state on a given page.

```
<% String selectedNavbarButton = "this_element"; %>
```

For more information on step 3, see the [“New JSP Page”](#) section on page C-2.

Installing the Navigation Bar Extension

When you install the Cisco Navigation Bar extension, you will overwrite a number of Dreamweaver files that are used for creating a standard Dreamweaver navigation bar. Installing the Cisco Navigation Bar extension overwrites the following files:

- \Configuration\Behaviors\Actions\Set Nav Bar Image.js
- \Configuration\Commands\Insert Nav Bar.htm
- \Configuration\Commands\Modify Nav Bar.htm
- \Configuration\Commands\NavigationBar.htm
- \Configuration\Objects\Common\NavigationBar.js
- \Configuration\Configuration\Shared\MM\Scripts\navBar.js

The files are located below the directory where Dreamweaver is located (for example, the C:\Program Files\Macromedia\Dreamweaver MX directory).



Note

If you want to be able to restore an installation of Dreamweaver so that a standard navigation bar can be created, make backup copies of the preceding files under a name like *filename.ORIGINAL* before you install the Cisco Navigation Bar extension.

To install the Cisco Navigation Bar extension, do the following:

-
- Step 1** If you have not already done so, install the Macromedia Extension Manager software, which can be downloaded from the Macromedia web site: www.macromedia.com.
 - Step 2** Copy the Cisco Navigation Bar extension package file (navbar.mxp) from the `\install_dir\nwsp\webapp\assets` to the Extensions directory, which is located below the directory where Dreamweaver is located. For example:
 C:\Program Files\Macromedia\Dreamweaver MX\Extensions
 - Step 3** Start Macromedia Extension Manager, choose **Install Extension** from the **Extension Manager File**, and install the Cisco Navigation Bar extension (Cisco NavBar modification).
-