



User Interfaces

Cisco MGM provides a graphical user interface using Unix Motif. For device specific configuration functions, Cisco MGM also provides access to the CiscoView GUI, as well as to command line interface functions through telnet sessions.

For detailed information on CiscoView, refer to the following documents:

- *Overview for CiscoView*
- *CiscoView Getting Started Guide*

For command line interface functions, refer to the following documents:

- *Cisco MGX 8230 Command Line Interface Guide*
- *Cisco MGX 8250 Command Line Interface Guide*
- *Cisco MGX 8850 Command Line Interface Guide*

Cisco EMF User Sessions

Cisco MGM uses the Cisco EMF user interface and security features. In order to gain access to Cisco MGM features, start a Cisco EMF user session.

Starting a Cisco EMF User Session



Note

The Cisco EMF server should already be running. When you start your system, if you receive a message that Cisco EMF is not running, contact your system administrator.

To start a Cisco EMF user session, follow these steps:

Step 1 From the command line on the terminal window, type:

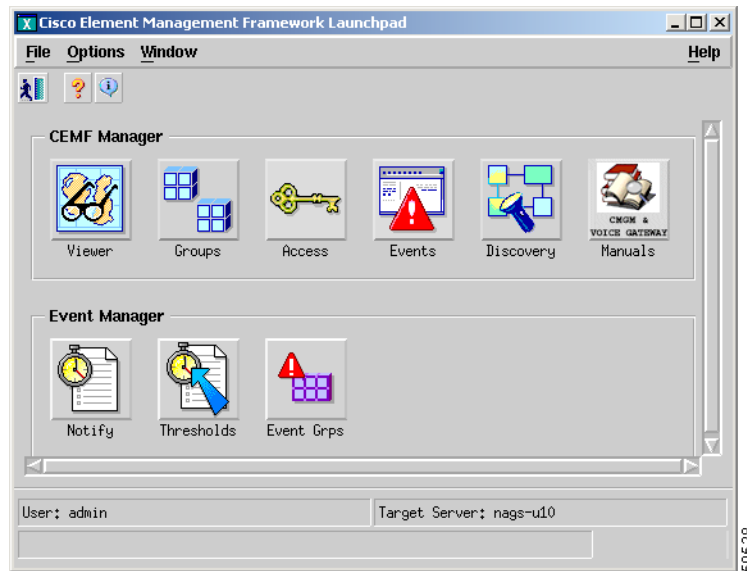
```
host# <CEMFROOT>/bin/cemf session
```

where <CEMFROOT> is the root directory for Cisco EMF installation (for example, /opt/cemf).

The Cisco EMF Login window opens.

- Step 2** Enter your user name and password, and click **OK**.
The Cisco EMF Launchpad window opens. (See [Figure 3-1](#).)

Figure 3-1 Cisco EMF Launchpad



The icons on the Launchpad represent applications provided by this Cisco EMF installation.

The area at the bottom of most windows displays status information. When you double-click in this area, the Status Dialog window opens. This window lists previous status messages.

Launching an Application

To launch an application, click on the desired application icon in the Cisco EMF Launchpad. A “busy” icon and a message in the status bar are displayed during launch. You can open more than one instance of an application simultaneously.

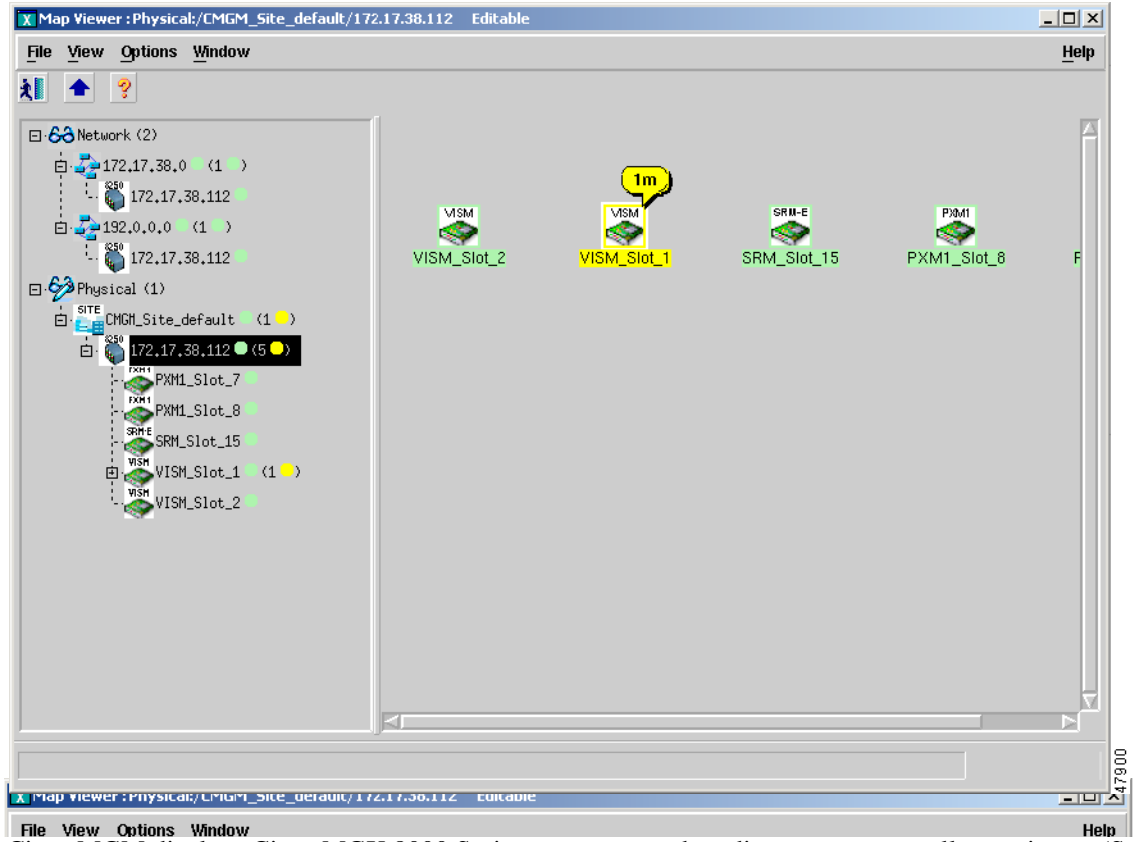


Note

If an application is already open, it appears in the Windows list. Click **Window** and choose the application from the drop down menu.

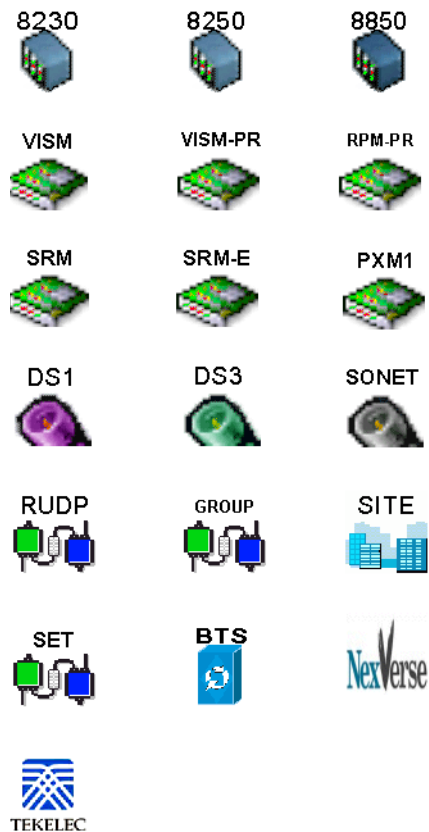
For Cisco MGM, the Viewer application displays information about the Cisco MGX 8000 Series network cards and other equipment. (See [Figure 3-2](#).)

Figure 3-2 Cisco MGM Topology View



Cisco MGM displays Cisco MGX 8000 Series gateways, and media gateway controllers as icons. (See Figure 3-3.)

Figure 3-3 Cisco MGM Icons



51209

Quitting a Cisco EMF User Session

To quit a Cisco EMF user session, follow these steps:

-
- Step 1** From the File menu, select **Quit** or press **Ctrl-Q**.
- Step 2** A dialog box is displayed.
- Do you wish to quit the CEMF Manager System?
- Click **Yes** to quit the session.
- All active applications are closed, and the session terminates.
-

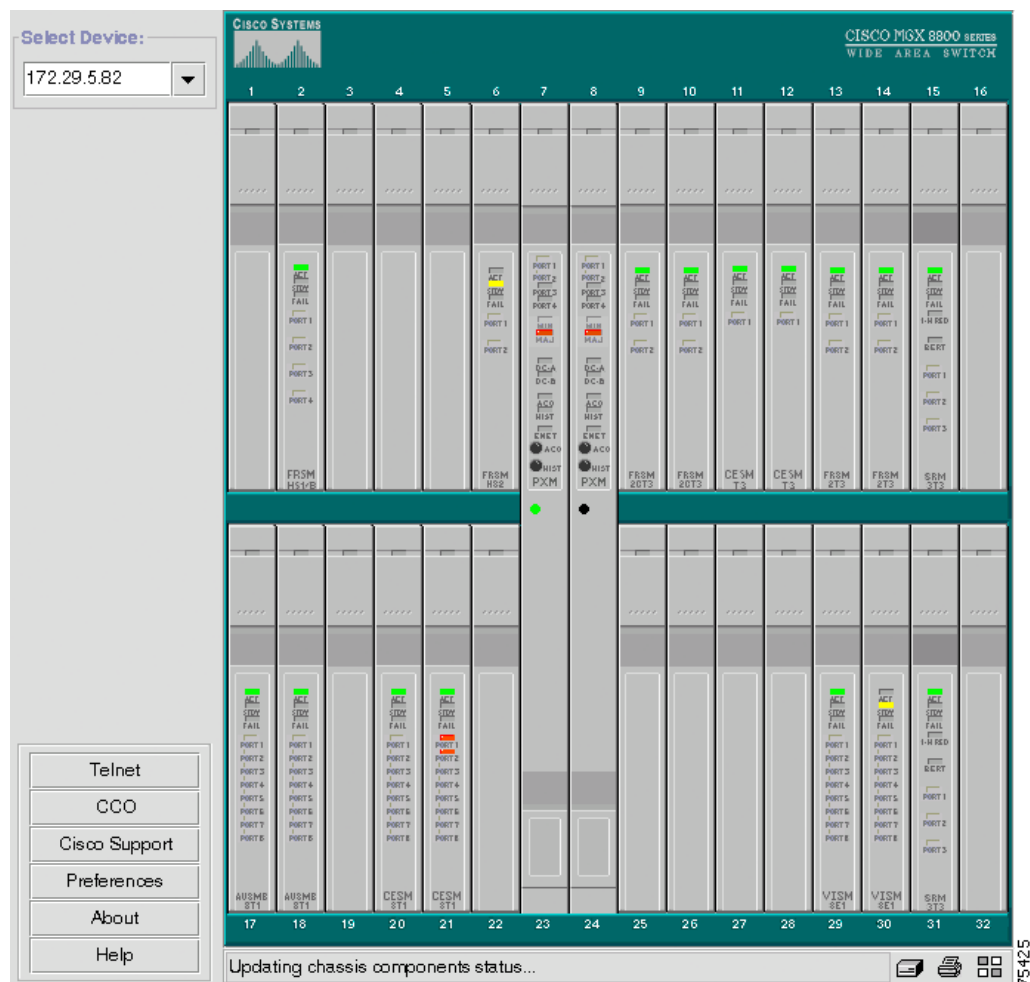
CiscoView

CiscoView is a graphical SNMP-based device management tool that provides powerful real-time views of your networked Cisco Systems devices. These views deliver a continuously updated picture of device configuration and performance conditions, with simultaneous views available for multiple-device sessions.

CiscoView also contains device-specific applications, such as Threshold Manager, StackMaker, and Flash File System, which further enhance your network management, monitoring, and troubleshooting capabilities.

Figure 3-4 shows an example view of the CiscoView interface.

Figure 3-4 CiscoView Interface



CiscoView device software is installed as a device package; for example, the MGX 8850 software is installed as the `MGX8850.pkg`. CiscoView uses the device package to display a dynamic view of the physical device and all its components.

If you are installing CiscoView and Cisco MGM on the same server, the device package is automatically installed as part of the Cisco MGM installation. For more information about Cisco MGM installation, refer to [Chapter 2, “Installation.”](#)

If you are installing CiscoView and Cisco MGM on different servers, use Cisco MGM CD to install the device package on the remote CiscoView server. For detailed information on CiscoView installation and operation, refer to the following documents:

- *Overview for CiscoView*
- *CiscoView Getting Started Guide*

Starting a CiscoView Session

To launch CiscoView and configure a Cisco MGX 8000 Series Carrier Voice Gateway from Cisco MGM, follow these steps:

-
- Step 1** Make sure you do not have any Netscape process already running. (If a Netscape process is running before you launch CiscoView for the first time in your Cisco MGM session, Netscape will incorrectly prompt you to install the java plug-in every time CiscoView is launched.)
 - Step 2** On the MapViewer, right-click the desired MGX 8000 Series node; then click **Tools**; then click **Launch CiscoView (Read Only)** for CiscoView read access or **Launch CiscoView (Read-Write)** for full CiscoView configuration access.
 - Step 3** A graphical view of the opened device is displayed in the CiscoView window. Use this view to configure and monitor the device and its components.
-

For detailed information about managing Cisco MGX 8000 Series gateways using CiscoView, refer to [CiscoView Documents](#) on CCO, or refer to the following individual documents:

WAN CiscoView Release 3 for the MGX 8230

WAN CiscoView Release 3 for the MGX 8250

WAN CiscoView Release 3 for Release 1 of the MGX 8850

WAN CiscoView Release 3 for Release 2 of the MGX 8850

Initiating a Telnet Session

To initiate a telnet session, follow these steps:

-
- Step 1** On the MapViewer, right-click the desired MGX 8000 Series node; click **Tools**; click **Telnet**.
The telnet screen opens.
 - Step 2** At the User prompt, enter the name of a valid MGX 8000 Series account name. For a new system, enter **SuperUser**.
 - Step 3** At the Password prompt, type the account password. On a new system, use **cisco** or the new password you assigned to this account.
-