



Stopping MKS Services

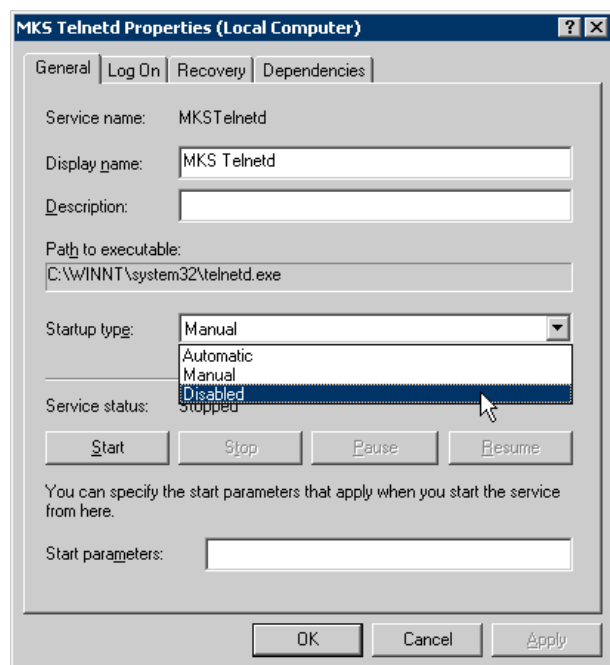
If the MKS Toolkit is installed on your system, you must stop the MKS Toolkit's Telnetd service and MKS Secure Shell service before enabling NCM and LMS co-residency. This appendix describes these procedures.

Stopping the MKS Telnetd Service

To stop the MKS Telnetd service do the following:

- Step 1** Navigate **Start > Settings > Control Panel > Administrative Tools > Services** to access the Services window.
- Step 2** Right-click **MKS Telnetd** and select **Properties**.
- Step 3** Set the **Startup Type** to **Disabled** as show in [Figure A-1](#)

Figure A-1 Disabling the MKS Telnetd Service Window



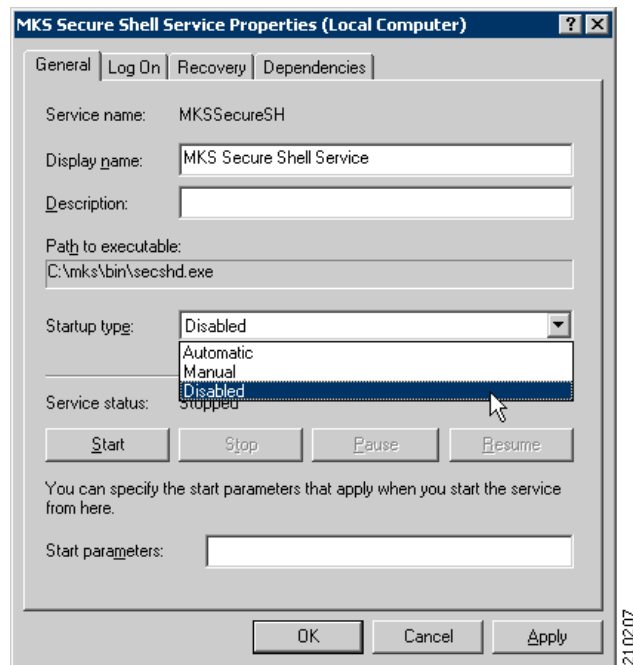
- Step 4 Click the **Stop** button.
 - Step 5 Click the **OK** button.
-

Stopping the MKS Secure Shell Service

To stop the MKS Secure Shell (ssh) service do the following:

- Step 1 Navigate **Start > Settings > Control Panel > Administrative Tools > Services** to access the Services window.
- Step 2 Right-click **MKS Secure Shell Service** and select **Properties**.
- Step 3 Set the **Startup Type** to **Disabled** as show in [Figure A-2](#)

Figure A-2 Disabling the MKS Secure Shell Service Window



- Step 4 Click the **Stop** button.
 - Step 5 Click the **OK** button.
-