



## Managing Maps

---

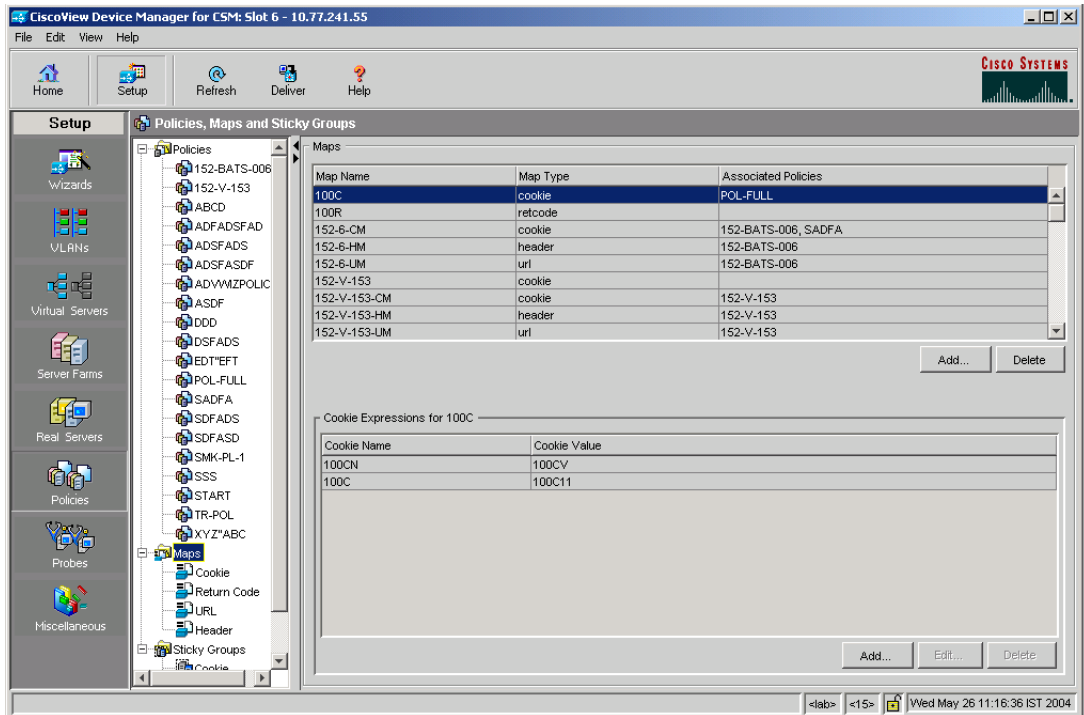
You can configure maps to define multiple URLs, cookies, HTTP headers, and return codes as groups that can be associated with a policy when configured.

This section contains the following topics:

- [Viewing Maps, page 8-2](#)
- [Adding a Map, page 8-6](#)
- [Viewing Cookie Maps, page 8-7](#)
- [Viewing Return Code Maps, page 8-11](#)
- [Viewing URL Maps, page 8-21](#)
- [Viewing Header Maps, page 8-24](#)

# Viewing Maps

Figure 8-1 Maps Page



You can view information about all Maps on the device.

To view the maps:

- 
- Step 1 Click **Home** at the top of the window
  - Step 2 Click **Policies** under **Services Dashboard**.
  - Step 3 Click **Maps**. A table with details of all configured Maps appears.

Or:

- 
- Step 1 Click **Setup** from the task bar.

113851

**Step 2** Click **Policies > Maps**, the screen is displayed on the right pane.

**Step 3** Click **Maps**. A table with details of all configured Maps appears.

The following fields are displayed:

Field	Description
Map Name	Displays the map name.
Map Type	Displays the type for the corresponding map name.
Associated Policies	Displays the associated policies for the map type.
Add	Click this button to add new map names and map types. For more information, see the <a href="#">“Adding a Map” section on page 8-6</a> .
Delete	Select the Map Name you wish to delete and click on this button to delete the existing map type.

The lower pane of the Map window displays the various match conditions of the selected map.

The match conditions will differ according to the type of map that you select in the table.

1. If you choose Cookie Map, the following fields appear:

Field	Description
Cookie Name	Name of the cookie.
Cookie Value	Value of the cookie.

From this section, you can access functions to do the following:

- Click **Add** to add cookie match conditions by entering the cookie name and value.

- Click **Edit** to edit cookie match conditions.
  - Select a match condition, then click **Delete** to delete the cookie match conditions.
2. If you choose Return Code Map, the following fields appear:

Field	Description
<b>Match Conditions</b>	
Lowest Return Code	The lowest return code.
Highest Return Code	The highest return code.
Action for Return Codes	Action for the return code.
Return Code Instances	Instances of the return code.
Reset Time after Threshold	Time for the reset.

From this section, you can access functions to do the following:

- Click **Add** to add match conditions. For more information, see [“Adding Match Conditions for a Return Code Map” section on page 8-15](#).
  - Click **Edit** to edit cookie match conditions.
  - Select a match condition, then click **Delete** to delete the match condition.
3. If you choose URL Map, the following fields appear:

Field	Description
<b>URL Method</b>	The URL method to be used.
<b>URL</b>	The URL associated with the map.

From this section, you can access functions to do the following:

- Click **Add** to add URL expressions by entering the URL method and URL.
  - Click **Edit** to edit URL expressions.
  - Select a URL expression, then click **Delete** to delete it.
4. If you choose Header Map, the following fields appear:

---

Field	Description
Header Name	Name of the header.
Header Value	Value of the header.

---

From this section, you can access functions to do the following:

- Click **Add** to add header match conditions by entering the cookie name and value.
- Click **Edit** to edit header match conditions.
- Select a header match condition, then click **Delete** to delete the match condition.

From the main Maps page, you can access functions to do the following:

- Click **Add** to add a new Map. For more information, see [“Adding a Map” section on page 8-6](#).
- Select a row and click **Delete** to delete a Map.
- View a Cookie Map. For more information, see [“Viewing Cookie Maps” section on page 8-7](#).
- View a Return Code Map. For more information, see [“Viewing Return Code Maps” section on page 8-11](#).
- View a URL Map. For more information, see [“Viewing URL Maps” section on page 8-21](#).
- View a Header Map. For more information, see [“Viewing Header Maps” section on page 8-24](#).

# Adding a Map

To add a map:

- 
- Step 1** Click **Home** at the top of the window
  - Step 2** Click **Policies** under **Services Dashboard**.
  - Step 3** Click **Maps**. A table with details of all configured Maps appears.
  - Step 4** Click **Add**. The Add Map dialog box appears.

Or:

- 
- Step 1** Click **Setup** from the task bar.
  - Step 2** Click **Policies**, the Policies screen is displayed in the right pane.
  - Step 3** Click **Maps**. A table with details of all configured Maps appears.
  - Step 4** Click **Add**. The Add Map dialog box appears.

The following fields are displayed:

Field	Description
Map Type	Specify the map type. The map types are, Cookies, Header, URL, and Return Code.
Map Name	Enter the map name.

The fields will differ according to the type of map that you select in the table.

For more information on adding a Cookie Map, see [“Adding a Cookie Map” section on page 8-9](#).

For more information on adding a Return Code Map, see [“Adding a Return Code Map” section on page 8-13](#).

For more information on adding a URL Map, see [“Adding a URL Map” section on page 8-23](#).

For more information on adding a Header Map, see [“Adding a Header Map” section on page 8-26](#).

---

## Viewing Cookie Maps

To view Cookie maps:

---

- Step 1** Click **Setup** from the task bar.
- Step 2** Click **Policies**, the Policies screen is displayed in the right pane.
- Step 3** Click **Maps**. A table with details of all configured Maps appears.
- Step 4** Select **Cookie Maps** from the object selector.

The following fields appear:

Field	Description
Map Name	Enter the map name.
Associated Policies	The policy associated to the Cookie Map.

---

From the main Cookie Map page, you can access functions to do the following:

- Click **Add** to add a new Cookie Map. For more information, see [“Adding a Cookie Map” section on page 8-9](#).
- Select a row and click **Delete** to delete a Cookie Map.

- Step 5** Select one of the map names from the table.

The following information is displayed:

Field	Description
<b>Cookie Expressions</b>	
Cookie Name	The name of the cookie map.
Cookie Value	The value of the cookie map.

From this section, you can access functions to do the following:

- Click **Add** to add cookie match condition to enter the Cookie Name and Value. For more information see the table below **Step 6** in [“Adding a Cookie Map” section on page 8-9](#).
- Click **Edit** to edit the cookie value.
- Select a Cookie Name, then click **Delete** to delete a Cookie.



# Adding a Cookie Map

To add a new Cookie Map:

- 
- Step 1** Click **Home** at the top of the window.
  - Step 2** Click **Policies** under **Services Dashboard**.
  - Step 3** Click **Maps**. A table with details of all configured Maps appears.
  - Step 4** Select **Cookie Maps** from the object selector.
  - Step 5** Click the **Add** button provided at the end of the table to add a new Cookie Map.

Or:

- 
- Step 1** Click **Setup** from the task bar.
  - Step 2** Click **Policies**, the Policies screen is displayed in the right pane.
  - Step 3** Click **Maps**. A table with details of all configured Maps appears.
  - Step 4** Select **Cookie Maps** from the object selector.
  - Step 5** Click the **Add** button provided at the end of the table. The Add Cookie Map page is displayed and the following fields appear:

Field	Description
Cookie Map Name	Enter the cookie map name.

- Step 6** To add a cookie name and value click the **Add** button provided at the end of the table. The Match Conditions page is displayed and the following fields appear.



**Note**

---

The Cookie Map can have a maximum of five match conditions.

---

---

Field	Description
Cookie Name	Enter a name for the cookie.
Cookie Value	Enter a value for the cookie.

---

From this page, you can access functions to do the following:

- Select a row and click **Delete** to delete a Cookie Map.

# Viewing Return Code Maps

To view Return Code Map:

- 
- Step 1** Click **Home** at the top of the window
  - Step 2** Click **Policies** under **Services Dashboard**.
  - Step 3** Click **Maps**. A table with details of all configured Maps appears
  - Step 4** Select **Return Code Map** from the object selector.

Or:

- 
- Step 1** Click **Setup** from the task bar.
  - Step 2** Click **Policies**, the Policies screen is displayed in the right pane.
  - Step 3** Click **Maps**. A table with details of all configured Maps appears
  - Step 4** Select **Return Code Map** from the object selector.

The following fields appear:

Field	Description
Map Name	Name of the map
Associated Server Farms	Server Farms associated with the map.

From the main Return Code Map page, you can access functions to do the following:

- Click **Add** to add a new Return Code Map. For more information, see [“Adding a Return Code Map” section on page 8-13](#).
  - Select a row and click **Delete** to delete a Return Code Map.
- Step 5** Select one of the maps from the table.

The following details appears below:

Field	Description
<b>Match Conditions</b>	
Lowest Return Code	The lowest return code.
Highest Return Code	The highest return code.
Action for Return Codes	Action for the return code.
Return Code Instances	Instances of the return code.
Reset Time after Threshold	Time for the reset.

From this section, you can access functions to do the following:

- Click **Add** to add match conditions. For more information, see [“Adding Match Conditions for a Return Code Map”](#) section on page 8-15.
- Click **Edit** to edit match conditions. For more information, see [“Editing Match Conditions for a Return Code Map”](#) section on page 8-18.
- Select a match condition, then click **Delete** to delete the match condition.

# Adding a Return Code Map

To add a new Return Code:

- 
- Step 1** Click **Home** at the top of the window
  - Step 2** Click **Policies** under **Services Dashboard**.
  - Step 3** Click **Maps**. A table with details of all configured Maps appears.
  - Step 4** Select **Return Code Map** from the object selector.
  - Step 5** Click **Add**. The Add Return Code Map dialog box appears.

Or:

- 
- Step 1** Click **Setup** from the task bar.
  - Step 2** Click **Policies**, the Policies screen is displayed in the right pane.
  - Step 3** Click **Maps**. A table with details of all configured Maps appears.
  - Step 4** Select **Return Code Map** from the object selector.
  - Step 5** Click **Add**. The Add Return Code Map dialog box appears.

The following fields appear:

Field	Description
Map Name	Enter a map name. Then click <b>Add</b> to add match conditions. For more information, see <a href="#">“Adding Match Conditions for a Return Code Map” section on page 8-15.</a>
Lowest Return Code	The lowest return code for the map.
Highest Return Code	The highest return code for the map.
Action for Return Codes	The action for the return code.
Return Code Instances	This feature is enabled depending on the Action for Return Code. Enter the instances of the return code.
Reset Time after Threshold	The time for the reset.

From this page, you can access functions to do the following:

- Click **Add** to add match conditions. For more information, see [“Adding Match Conditions for a Return Code Map” section on page 8-15.](#)
- Select a row and click **Delete** to delete a match condition.

# Adding Match Conditions for a Return Code Map




To add match conditions for a Return Code Map:

- 
- Step 1** Click **Home** at the top of the window.
  - Step 2** Click **Policies** under **Services Dashboard**.
  - Step 3** Click **Maps**. A table with details of all configured Maps appears.
  - Step 4** Select **Return Code Map** from the object selector.
  - Step 5** Click **Add**. The Add Return Code Map dialog box appears.
  - Step 6** Click **Add** in the dialog box to add match condition for the selected type of Return Code Map.


Or:

- 
- Step 1** Click **Setup** from the task bar.
  - Step 2** Click **Policies**. The Policies screen is displayed in the right pane.
  - Step 3** Click on **Maps**. A table with details of all configured Maps appears.
  - Step 4** Select **Return Code Map** from the object selector.
  - Step 5** Click **Add**. The Add Return Code Map dialog box appears.
  - Step 6** Click **Add** in the dialog box to add match condition for the selected type of Return Code Map.

The following field appears:

Field	Description
<b>Match Conditions</b>	
Lowest Return Code	<p>Enter the lowest return code.</p>  <p><b>Note</b> Overlapping return codes cannot be configured.</p>
Highest Return Code	<p>Enter the highest return code. Maximum no. of return codes that can be configured is 100.</p>  <p><b>Note</b> Overlapping return codes cannot be configured.</p> <p>Example: If you have 100-116,200-216 already, you cannot configure more than <math>(100 - (116-100+1) - (216-200+1)) = 66</math>. So, you can have 300-365. If you add 300-366, an error message will popup.</p>
Action for Return Codes	<p>Action for the return code.</p> <p>You can choose from Count, Log, and Remove. The return code instance and return code reset fields will be enabled only when you choose Remove or Log.</p>
Return Code Instances	<p>Enter the instances of the return code.</p>  <p><b>Note</b> This field is disabled if the Action for the Return Code is Count.</p>



Field	Description
Return Code Reset	<p data-bbox="801 240 1212 297">Select this check box to enable reset time after threshold.</p> <p data-bbox="801 321 848 362"></p> <p data-bbox="801 370 1225 459"><b>Note</b> This field is disabled if the Action for the Return Code is Count.</p>
Reset Time after Threshold	Enter the time for the reset.

# Editing Match Conditions for a Return Code Map




To edit match conditions for a Return Code Map:


- 
- Step 1 Click **Home** at the top of the window.
  - Step 2 Click **Policies** under **Services Dashboard**.
  - Step 3 Click **Maps**. A table with details of all configured Maps appears.
  - Step 4 Select **Return Code Map** from the object selector.
  - Step 5 Click **Add**. The Add Return Code Map dialog box appears.
  - Step 6 Click **Edit** to edit match conditions for the selected Return Code Map.

Or:

- 
- Step 1 Click **Setup** from the task bar.
  - Step 2 Click on **Policies**, the Policies screen is displayed in the right pane.
  - Step 3 Click on **Maps**. A table with details of all configured Maps appears.
  - Step 4 Select **Return Code Map** from the object selector.
  - Step 5 Click **Add**. The Add Return Code Map dialog box appears.
  - Step 6 Click **Edit** to edit match conditions for the selected Return Code Map.

The following field appears:

Field	Description
<b>Match Conditions</b>	
Lowest Return Code	<p>Modify the lowest return code.</p>  <p><b>Note</b> Overlapping return codes cannot be configured.</p>
Highest Return Code	<p>Modify the highest return code.</p>  <p><b>Note</b> Overlapping return codes cannot be configured.</p> <p>Example: If you have 100-116,200-216 already, you cannot configure more than <math>(100 - (116-100+1) - (216-200+1)) = 66</math>. So, you can have 300-365. If you add 300-366, an error message will popup.</p>
Action for Return Codes	<p>Action for the return code.</p> <p>You can choose from Count, Log, and Remove. The return code instance and return code reset fields will be enabled only when you choose Remove or Log.</p>
Return Code Instances	<p>Modify the instances of the return code.</p>  <p><b>Note</b> This field is disabled if the Action for the Return Code is Count.</p>

Field	Description
Return Code Reset	<p data-bbox="801 240 1224 298">Select the check box to reset the time after threshold.</p> <p data-bbox="801 321 848 358"></p> <p data-bbox="801 365 1224 456"><b>Note</b> This field is disabled if the Action for the Return Code is Count.</p>
Reset Time after Threshold	Modify the time for the reset.

# Viewing URL Maps

To view the URL Maps:

- 
- Step 1** Click **Home** at the top of the window
  - Step 2** Click **Policies** under **Services Dashboard**.
  - Step 3** Click **Maps**. A table with details of all configured Maps appears.
  - Step 4** Select **URL Maps** from the object selector.

Or:

- 
- Step 1** Click **Setup** from the task bar.
  - Step 2** Click **Policies**, the Policies screen is displayed in the right pane.
  - Step 3** Click **Maps**. A table with details of all configured Maps appears.
  - Step 4** Select **URL Maps** from the object selector.

The following fields appear:

Field	Description
Map Name	The name of the map
Associated Policies	Policies associated with the map.

From the main URL Map page, you can access functions to do the following:

- Click **Add to** add a new URL Map. For more information, see [“Adding a URL Map” section on page 8-23](#).
  - Select a row and click **Delete** to delete a URL Map.
- Step 5** Select one of the maps from the table.

The following information is displayed:

Field	Description
<b>Match Conditions</b>	
URL Method	URL Method to be used.
URL	URL associated with the map.

From this section, you can access functions to do the following:

- Click **Add** to add match condition to enter the URL method and URL. For more information see the table below **Step 6** in [“Adding a URL Map” section on page 8-23](#).
- Click **Edit** to edit the match conditions to edit the URL.
- Select a URL expression, then click **Delete** to delete a match condition.

# Adding a URL Map

To add a new URL Map:

- 
- Step 1** Click **Home** at the top of the window
  - Step 2** Click **Policies** under **Services Dashboard**.
  - Step 3** Click **Maps**. A table with details of all configured Maps appears
  - Step 4** Select **URL Maps** from the object selector.
  - Step 5** Click the **Add** button provided at the end of the table to add a new URL Map.

Or:

- 
- Step 1** Click **Setup** from the task bar.
  - Step 2** Click **Policies**, the Policies screen is displayed in the right pane.
  - Step 3** Click **Maps**. A table with details of all configured Maps appears
  - Step 4** Select **URL Maps** from the object selector.
  - Step 5** Click the **Add** button provided at the end of the table. The Add URL Map page is appears and the following field is displayed:

Field	Description
URL Map Name	Enter the URL Map Name.

- Step 6** To add a URL Method and URL, click the **Add** button provided at the end of the table. The Match Conditions page is displayed and the following fields appear.

Field	Description
URL Method	Click <input type="text" value="▽..."/> and from the list select a URL Method or enter the URL Method to be used.
URL	Enter the URL associated with the map.

## Viewing Header Maps

To view the Header Maps:

- 
- Step 1 Click **Home** at the top of the window
  - Step 2 Click **Policies** under **Services Dashboard**.
  - Step 3 Click **Maps**. A table with details of all configured Maps appears.
  - Step 4 Select **Header Maps** from the object selector.

Or:

- 
- Step 1 Click **Setup** from the task bar.
  - Step 2 Click **Policies**, the Policies screen is displayed in the right pane.
  - Step 3 Click **Maps**. A table with details of all configured Maps appears.
  - Step 4 Select **Header Maps** from the object selector.

The following fields appear:



Field	Description
Map Name	The name of the map.
Associated Policies	The policies associated with the map.

From the main Header Map page, you can access functions to do the following:

- Click **Add** to add a new Header Map. For more information, see [“Adding a Header Map” section on page 8-26](#).
- Select a map and click **Delete** to delete a Header Map.

**Step 5** Select one of the maps from the table.

The following fields appear below:

Field	Description
<b>Match Conditions</b>	
Header Name	The header name of the map.
Header Value	The header value of the map.

From this section, you can access functions to do the following:

- Click **Add** to add match condition to enter the Header name and value. For more details see the table below **Step 6** in [“Adding a Header Map” section on page 8-26](#).
- Click **Edit** to edit the match conditions to edit the Header Value.
- Select a match condition, then click **Delete** to delete a match condition.

# Adding a Header Map

To add a new Header Map:

- 
- Step 1** Click **Home** at the top of the window
  - Step 2** Click **Policies** under **Services Dashboard**.
  - Step 3** Click **Maps**. A table with details of all configured Maps appears
  - Step 4** Select **Header Maps** from the object selector.
  - Step 5** Click **Add**. The Add Header Map dialog box appears.

Or:

- 
- Step 1** Click **Setup** from the task bar.
  - Step 2** Click **Policies**, the Policies screen is displayed in the right pane.
  - Step 3** Click **Maps**. A table with details of all configured Maps appears
  - Step 4** Select **Header Maps** from the object selector.
  - Step 5** Click **Add**. The Add Header Map dialog box appears and the following field is displayed:

Field	Description
Header Map Name	Click <input type="text" value="▽..."/> and from the list and select a Header name or enter a header name.


- Step 6** To add a Header Name and Value, click the **Add** button provided at the end of the table. The Match Conditions page is displayed and the following fields appear.




---

**Note** The Header Map can have a maximum of five match conditions.

---

Field	Description
Header Name	Click  and from the list select a Header Name or enter the Header Name to be used.
Header Value	Enter the value for the Header Map.

