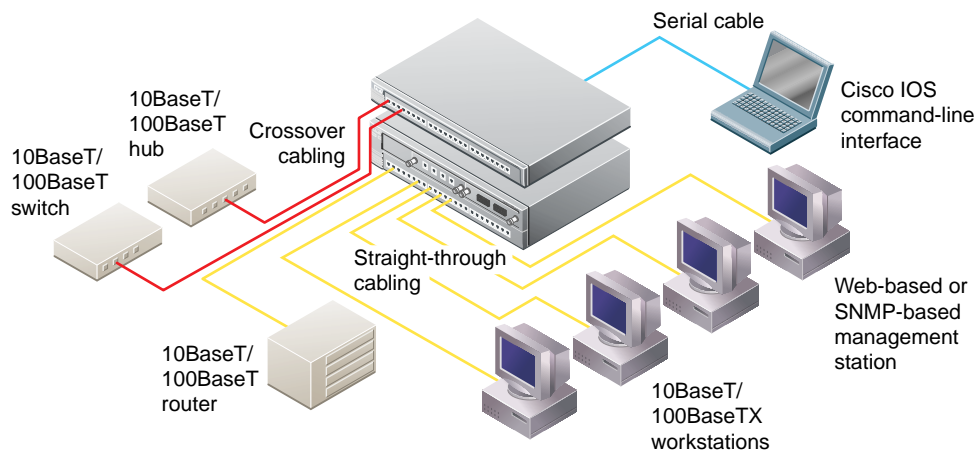


# Quick Start Guide

## CATALYST 2900 SERIES XL SWITCHES



1

TAKE OUT WHAT YOU NEED

2

CABLE THE SWITCH

3

ASSIGN IP INFORMATION TO THE SWITCH

4

ACCESS THE SWITCH FROM YOUR BROWSER



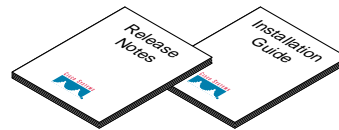


# 1 Take Out What You Need

Catalyst 2900 series XL Ethernet switch



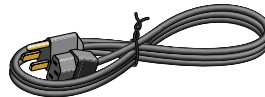
*Catalyst 2900 Series XL Installation Guide and Release Notes for Catalyst 2900 Series XL and Catalyst 3500 Series XL Cisco IOS Release 12.0(5)XP*



RJ-45-to-RJ-45 rollover console cable



AC power cable



RJ-45-to-DB-9 serial connector



RJ-45-to-DB-9 terminal connector



Rack-mount kit

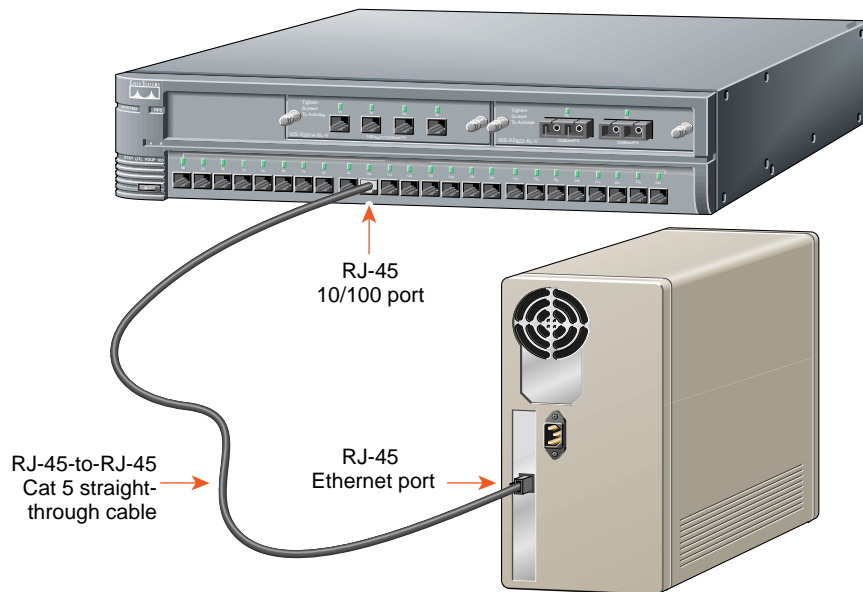


Rubber feet



*Note: You need to supply a Category 5 straight-through or crossover cables to connect to Ethernet devices.*

## 2 Cable the Switch



2

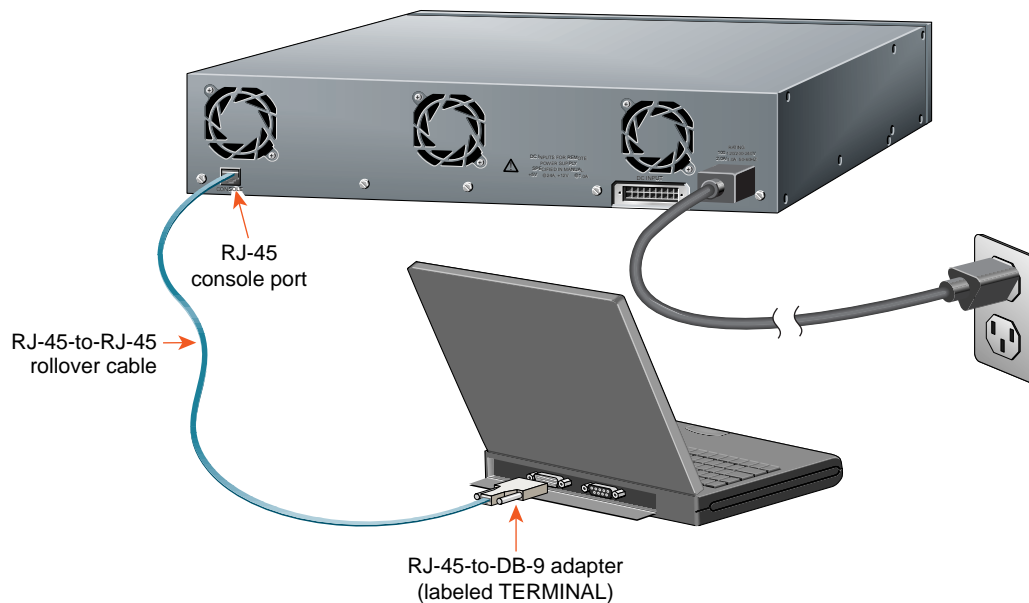
### Connect PCs, Workstations, Servers, and Routers

- 1 Connect a Category 5 **straight-through** cable (not supplied) to a 10/100 port on the front panel of the switch.
- 2 Connect the other end of the cable to the RJ-45 port of the PC, workstation, server, or router.

### Connect Switches and Hubs

- 1 Connect a Category 5 **crossover** cable (not supplied) to a 10/100 port on the front panel of the switch.
- 2 Connect the other end of the cable to an RJ-45 port of the target switch or hub.

*Note: Use a straight-through cable to connect two ports when one of the ports is designated with an X. Use a crossover cable to connect two ports when both ports are designated with an X.*



## Connect the AC Power Cord

- 1 Connect one end of the supplied AC power cable to the rear panel of the switch.
- 2 Connect the other end of the power cable to a grounded AC outlet.

## Connect to Your Console

- 1 Connect the supplied flat, blue, rollover cable to the CONSOLE port on the switch rear panel.
- 2 Connect the other end of the cable to a terminal or PC with terminal-emulation software. Use one of the supplied adapters if you need to.

The terminal or emulation software must match the settings on the console port. Check your terminal or emulation software to be sure it matches the settings listed below, and reconfigure it if it does not.

- 9600 baud
- No parity
- 8 data bits
- 1 stop bit

## 3 Assign IP Information to the Switch

The first time that you access the switch, it runs a setup program that prompts you for IP and other configuration information. This information is needed so that the switch can communicate with local routers and the Internet. It is also required if you plan to use Cisco Visual Switch Manager (CVSM) to configure and manage the switch.

*Note: If the switch will be a cluster member, it is not necessary to assign IP information or a password if the switch will be managed through the IP address of the command switch. If you are configuring the switch as a standalone switch or as a command switch (Enterprise Edition only), you must assign IP information. Refer to the Cisco IOS Desktop Switching Software Configuration Guide for more information.*

### IP Information Requirements

Before you start the switch, get the following information from your system administrator:

- Switch IP address
- Subnet mask (IP netmask)
- Default gateway (router)
- Enable secret password

### First-Time Startup

Use this procedure to assign IP information to the switch:

- 1 Enter **Y** at the first prompt:

```
Continue with configuration dialog?  
[yes/no]: y
```

- 2 Enter the switch IP address, and press

**Return:**

```
Enter IP address:
```

- 3 Enter the subnet mask, and press

**Return:**

```
Enter IP netmask:
```

- 4 Enter **Y** at the next prompt to specify a default gateway (router):

```
Would you like to enter a default  
gateway address? [yes]: y
```

- 5 Enter the IP address of the default gateway, and press **Return**.

```
IP address of the default gateway:
```

- 6 Enter a host name for the switch, and press **Return**.

```
Enter a host name:
```

- 7 Enter a secret password, and press **Return**.

```
Enter enable secret:
```

The initial configuration displays:

The following configuration command script was created:

```
interface VLAN1
ip address 172.20.153.36 255.255.255.0
ip default-gateway 172.20.153.01
enable secret 5 $1$M3pS$cXtAlkyR3/6Cn8/
snmp community private rw
snmp community public ro
cluster enable cls_name
end
```

Use this configuration? [yes/no]:

**8** Verify that the addresses are correct.

**9** Enter **Y**, and press **Return**.

If the addresses are not correct, enter **N**, press **Return**, and begin again at Step 1.

## Where to Go Next

After you complete the setup program, the switch can run the created default configuration. If you want to change this configuration or want to perform other management tasks, use one of these tools:

- Command-line interface (CLI)
- CVSM and Cluster Management software

To use the CLI, enter commands at the switch> prompt. Refer to the *Cisco IOS Desktop Switching Software Configuration Guide* or the *Cisco IOS Desktop Switching Command Reference* (online only) for configuration information.

To use CVSM, go to Section 4, “Access the Switch from Your Browser.”

## 4 Access the Switch from Your Browser

After you assign an IP address to the switch, you can access the switch from your browser and use CVSM to view or change configuration settings. If this is a command switch (Enterprise Edition only), you can use Cluster Management software to configure other switches. To use web-based tools, follow the procedure to set the appropriate browser options.

CVSM supports the following platforms and network browsers:

Operating System	Minimum Operating System Requirements	Netscape Communicator	Microsoft Internet Explorer
Windows 95	Service Pack 1	4.5, 4.51, or 4.61	4.01a or 5.0
Windows 98	Second Edition	4.5, 4.51, or 4.61	4.01a or 5.0
Windows NT	Service Pack 3	4.5, 4.51, or 4.61	4.01a or 5.0
Solaris 2.5.1 or higher	SUN-recommended patch cluster for the OS and Motif library patch 103461-24	4.5, 4.51, or 4.61	Not supported

*Netscape Communicator version 4.6 is NOT Supported.*

### Configuring Netscape Communicator (All Versions)

- 1 From the menu bar, select **Edit>Preferences**.
- 2 In the Preferences window, click **Advanced**.
- 3 Select the **Enable Java**, **Enable JavaScript**, and **Enable Style Sheets** check boxes.
- 4 From the **Advanced** drop-down list, select **Cache**.
- 5 Select **Every time**.
- 6 Click **OK**.

### Configuring Internet Explorer (4.01a)

*Note: To configure Internet Explorer 5.0, refer to the Cisco IOS Desktop Switching Software Configuration Guide.*

- 1 From the menu bar, select **View>Internet Options**.
- 2 In the Internet Options window, click **Advanced**.
- 3 Scroll through the list of options to Java VM, select the **Java JIT compiler enabled** and **Java logging enabled** check boxes, and click **Apply**.



- 4 Click **General**. In the Temporary Internet Files section, click **Settings**. The Settings window opens.
- 5 Select **Every visit to the page**, and click **OK**.
- 6 In the Internet Options window, click **Security**.
- 7 In the Zone drop-down list, select **Trusted Sites Zone**, and click **Custom**.
- 8 Click **Settings**.
- 9 In the **Java>Java permissions** section, select **Custom**. Click the **Java Custom Setting**, which appears at the bottom of the window.
- 10 In the Trusted Sites Zone window, click **Edit Permissions**.
- 11 If the buttons under **Run Unsigned Content** are not available, select either **Medium** or **Low** security in the Reset Java Permissions list box. Click **Reset**.
- 12 Under **Run Unsigned Content**, select **Enable**, and click **OK**.
- 13 In the Security Settings window, click **OK**.

- 14 In the Internet Options window, click **Security**. Verify that the Zone drop-down list is set to **Trusted Sites Zone**.
- 15 In the Trusted Sites Zone section, click **Add Sites**.
- 16 In the Trusted Sites Zone window, deselect the **Require server verification** check box.
- 17 In the **Add this Web site to the Zone** field, enter the IP address of the switch.
- 18 Click **Add**, and then click **OK**.

*Note: If the switch will be a member of a cluster, you can enter the address of the cluster command switch. Refer to the Cisco IOS Desktop Switching Software Configuration Guide for more information.*

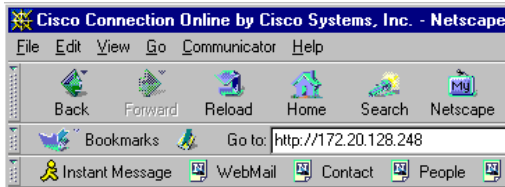
- 19 In the Internet Options window, click **Apply**, and then click **OK**.

## Display CVSM

Once the browser is configured, display the CVSM as follows:

- 1 Enter the IP address of the switch in the Location field (the Address field if you are using Internet Explorer).

*Note: You can cut and paste the switch IP address from the window that you use to complete the setup program.*



- 2 Press **Return**. The universal access page for your switch displays.

### Cisco Systems

Accessing Cisco WS-C2924M-XL-EN

[Visual Switch Manager](#) - Manage the Switch through the web interface.  
[To the Switch](#) - To the Switch.  
[Show interfaces](#) - Display the status of the interfaces.  
[Show diagnostic log](#) - Display the diagnostic log.  
[Web Console](#) - Display the HTML command line interface.  
[Show tech support](#) - Display information commonly needed by tech support.

14333

*Note:* You are prompted with a message if your browser version is not supported.

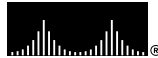
- 3 Click **Visual Switch Manager** to display the CVSM home page.

## For More Information

See the *Catalyst 2900 Series XL Installation Guide* for detailed instructions on installing the Cisco 2900 series XL switch. See the *Cisco IOS Desktop Switching Software Configuration Guide* for detailed instructions on using CVSM, the Cisco IOS CLI, and Cluster Management software to configure and manage switches. See *Release Notes for the Catalyst 2900 Series XL and Catalyst 3500 Series XL Cisco IOS Release 12.0(5)XP* for recent information about the Catalyst 2900 series XL switch.



## CISCO SYSTEMS



### Corporate Headquarters

Cisco Systems, Inc.  
170 West Tasman Drive  
San Jose, CA 95134-1706  
USA  
<http://www.cisco.com>  
Tel: 408 526-4000  
800 553-NETS (6387)  
Fax: 408 526-4100

### European Headquarters

Cisco Systems Europe s.a.r.l.  
Parc Evolic, Batiment L1/L2  
16 Avenue du Quebec  
Villebon, BP 706  
91961 Courtaboeuf Cedex  
France  
<http://www-europe.cisco.com>  
Tel: 33 1 69 18 61 00  
Fax: 33 1 69 28 83 26

### Americas

**Headquarters**  
Cisco Systems, Inc.  
170 West Tasman Drive  
San Jose, CA 95134-1706  
USA  
<http://www.cisco.com>  
Tel: 408 526-7660  
Fax: 408 527-0883

### Asia Headquarters

Nihon Cisco Systems K.K.  
Fuji Building, 9th Floor  
3-2-3 Marunouchi  
Chiyoda-ku, Tokyo 100  
Japan  
<http://www.cisco.com>  
Tel: 81 3 5219 6250  
Fax: 81 3 5219 6001

**Cisco Systems has more than 200 offices in the following countries. Addresses, phone numbers, and fax numbers are listed on the Cisco Connection Online Web site at <http://www.cisco.com/offices>.**

Argentina • Australia • Austria • Belgium • Brazil • Canada • Chile • China • Colombia • Costa Rica • Croatia • Czech Republic • Denmark • Dubai, UAE  
Finland • France • Germany • Greece • Hong Kong • Hungary • India • Indonesia • Ireland • Israel • Italy • Japan • Korea • Luxembourg • Malaysia  
Mexico • The Netherlands • New Zealand • Norway • Peru • Philippines • Poland • Portugal • Puerto Rico • Romania • Russia • Saudi Arabia • Singapore  
Slovakia • Slovenia • South Africa • Spain • Sweden • Switzerland • Taiwan • Thailand • Turkey • Ukraine • United Kingdom • United States •  
Venezuela

Copyright © 1999, Cisco Systems, Inc. All rights reserved. Access Registrar, AccessPath, Any to Any, AtmDirector, CCDA, CCDE, CCDP, CCIE, CCNA, CCNP, CCSI, CD-PAC, the Cisco logo, Cisco Certified Internetwork Expert logo, *CiscoLink*, the Cisco Management Connection logo, the Cisco NetWorks logo, the Cisco Powered Network logo, Cisco Systems Capital, the Cisco Systems Capital logo, Cisco Systems Networking Academy, the Cisco Systems Networking Academy logo, the Cisco Technologies logo, ConnectWay, Fast Step, FireRunner, GigaStack, IGX, Internet Quotient, Kernel Proxy, MGX, Natural Network Viewer, NetSonar, Network Registrar, *Packet*, PIX, Point and Click Internetworking, Policy Builder, Precept, Secure Script, ServiceWay, SlideCast, SMARTnet, *The Cell*, TrafficDirector, TransPath, ViewRunner, VisionWay, VlanDirector, Workgroup Director, and Workgroup Stack are trademarks; Changing the Way We Work, Live, Play, and Learn, Empowering the Internet Generation, The Internet Economy, and The New Internet Economy are service marks; and ASIST, BPX, Catalyst, Cisco, Cisco IOS, the Cisco IOS logo, Cisco Systems, the Cisco Systems logo, the Cisco Systems Cisco Press logo, Enterprise/Solver, EtherChannel, EtherSwitch, FastHub, FastLink, FastPAD, FastSwitch, GeoTel, IOS, IP/TV, IPX, LightStream, LightSwitch, MICA, NetRanger, Post-Routing, Pre-Routing, Registrar, StrataView Plus, Stratm, TeleRouter, and VCO are registered trademarks of Cisco Systems, Inc. and/or its affiliates in the U.S. and certain other countries. All other trademarks mentioned in this document are the property of their respective owners. The use of the word partner does not imply a partnership relationship between Cisco and any of its resellers. (9909R)



Printed in the USA on recycled paper containing 10% postconsumer waste.

78-6074-03