

Element Management System Alarm Server

This chapter describes the Element Management System(EMS) alarm server. The EMS alarm server application works in conjunction with the UNIX and Windows NT versions of EMS. Alarms are user configurable for each Cisco 6700 NE.

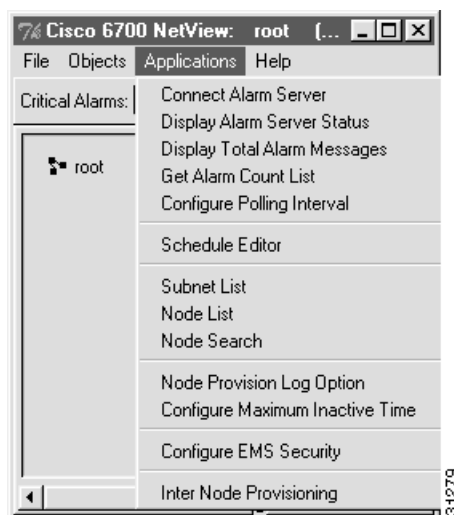
Launching the Alarm Server

Launching the EMS alarm server is detailed in the “Start EMS on the Workstation” section on page 3-10.

Connecting to the Alarm Server

From the net view, select **Applications > Connect Alarm Server** from the menu bar. (See Figure 12-1.)

Figure 12-1 Net View Menu



Look in the title bar of the window (to the right of “Cisco 6700 NetView”). If the alarm server is connected, the title bar will give the IP address of the alarm server.

If EMS could not connect to the alarm server, the title bar will read “Failed to connect to alarm server.” Either the alarm server is not running, or it has been provisioned with an incorrect IP address. See Chapter 2, “EMS Installation,” for instructions on installing and provisioning the EMS alarm server.

Monitoring the Alarm Server

From the net view, select **Applications > Display Alarm Server Status** from the menu bar. EMS launches the alarm server status window. (See Figure 12-2.)

Figure 12-2 Alarm Server Status Window



Shutting Down the Alarm Server

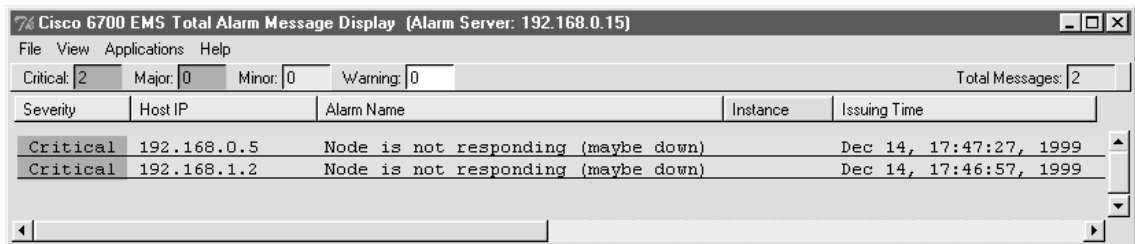
From the net view, select **Applications > Display Alarm Server Status** from the menu bar. EMS launches the alarm server status window. (See Figure 12-2.)

To shut down the alarm server, click **Stop Alarm Server**. EMS asks for confirmation; click **Yes** to confirm.

Displaying and Modifying Alarms

From the net view, select **Applications > Display Total Alarm Messages** from the menu bar. EMS launches the alarm display window. (See Figure 12-3.)

Figure 12-3 Total Alarm Message Display Window



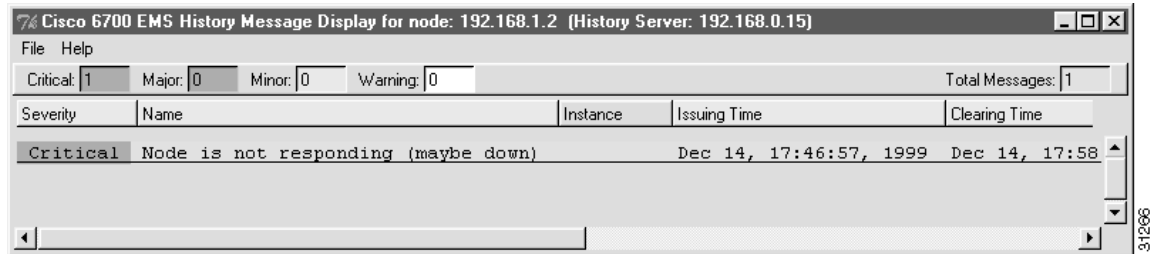
These messages can be sorted based on time of occurrence, severity, or by alarm name.

History Message Display

The history message display provides a summary of all alarm conditions that have been cleared (resolved) to date. The messages in this display cannot be modified or deleted. These messages can be sorted based on time of occurrence, severity, or by alarm name.

To view the alarm message display, select **History Message Display** from the menu bar or popup menu.

Figure 12-4 History Message Display



Event Message Display

The event message display provides a summary of NE events that do not affect service (such as MCC switchover and timing reference switchover). This display cannot be modified or deleted. These messages can be sorted based on time of occurrence or by alarm name.

To view the event message display, select **Event Message Display** from the menu bar or popup menu. (See Figure 12-5.)

Figure 12-5 Event Message Display

