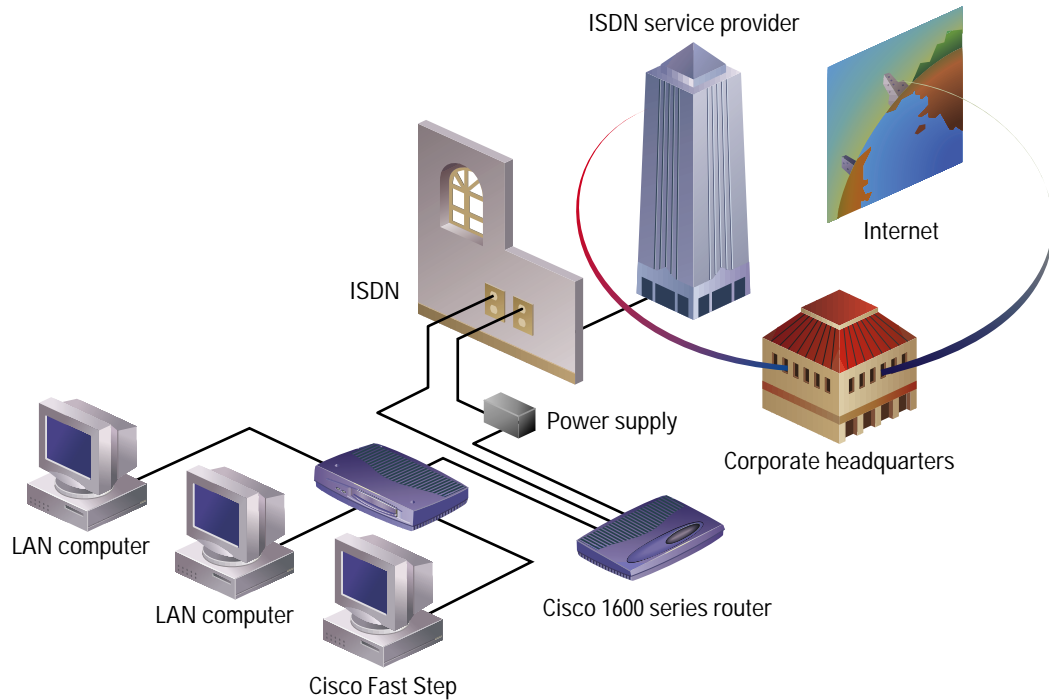


Quick Start Guide

CISCO 1600 FAST STEP SOFTWARE



1

INSTALL CISCO FAST STEP 1600 SOFTWARE

2

GATHER NETWORK INFORMATION

3

TROUBLESHOOTING



1

Install Cisco Fast Step Software

Cisco Fast Step simplifies the setup and monitoring of Cisco routers. It runs on Microsoft Windows 95, Windows 98, and Windows NT 4.0 personal computer systems. The application is provided with your router on the Cisco Fast Step CD-ROM. It is also available on Cisco Connection Online.

Verify your ISDN service is installed, and the router is cabled and powered on. Insert the CD-ROM located in the back of this guide in your CD-ROM drive. The **Fast Step** installation wizard starts automatically. Follow the on-screen instructions that guide you through router setup and test.

System Requirements

Microsoft Windows 95, Microsoft Windows 98, Microsoft Windows NT version 4.0

Pentium or equivalent 486 computer

16 MB of hard disk space

8 MB of RAM on Windows 95 or 98 (16 MB recommended)

16 MB of RAM on Windows NT (24 MB recommended)

SVGA monitor, 640 by 480 pixels, 256 colors

CD-ROM drive

2 Gather Network Information

The information requested in this section is intended for a variety of configurations. Some of these entries might not be required for your setup. Your service provider, network administrator, and Internet service provider (ISP) can provide specific information.

Before you begin your configuration, verify single 128-kbps ISDN BRI (which is equivalent to two telephone lines), Frame Relay, or leased line service is installed.

Switch type (ISDN only):

- | | |
|--|---|
| <input type="checkbox"/> NI1 (North America) | <input type="checkbox"/> 5ESS (North America) |
| <input type="checkbox"/> DMS (North America) | <input type="checkbox"/> INS (Japan) |
| <input type="checkbox"/> VN3 (France) | <input type="checkbox"/> NET3 (Europe) |
| <input type="checkbox"/> 1TR6 (Germany) | <input type="checkbox"/> TPH (Australia) |

SPID Numbers (North America ISDN only)

SPID1 _____ SPID2 _____

LAN addresses are either statically assigned or dynamically assigned. If you do not know which you are using, assume the LAN addresses are dynamically assigned, and skip this section. Otherwise, obtain the following LAN information from your network administrator:

E0 LAN IP address ____ . ____ . ____ . ____ LAN subnet mask ____ . ____ . ____ . ____

For 1605:

E1 LAN IP address ____ . ____ . ____ . ____ LAN subnet mask ____ . ____ . ____ . ____

If you are connecting to a remote corporate network (RCN), obtain the following information from your network administrator:

RCN telephone number 1 (ISDN only) _____

RCN telephone number (ISDN only) 2 _____

Router user or Point-to-Point Protocol (PPP) name _____

WAN IP address ____ . ____ . ____ . ____

WAN subnet mask ____ . ____ . ____ . ____

PPP PAP password or CHAP secret _____

Router user (or PPP) name of the central device _____

2

Gather Network Information

If you are connecting to an ISP, obtain the following information from your ISP:

ISP telephone number 1 (ISDN only) _____
ISP telephone number 2 (ISDN only) _____
ISP user name _____
WAN IP address _____
WAN subnet mask _____
PPP PAP password or CHAP secret _____
Router user (or PPP) name of the central device _____

For a WAN connection using a synchronous serial interface, complete the following:

Encapsulation type (check one): Frame Relay PPP HDLC
DLCI Value (for Frame Relay) _____

To use Internet applications like Web browsers or e-mail, or to connect to Windows NT servers using TCP/IP, obtain the following information from your RCN or ISP:

Primary DNS _____
Secondary DNS _____
Primary WINS (Windows Internet Naming Service) _____
Secondary WINS server _____

To use DMZ servers, obtain the following addresses from your ISP:

Mail/Web _____ Web _____
Mail _____ FTP _____

To connect to files and printers computers running the Novell IPX protocol, obtain the following information from your network administrator:

IPX WAN network number (RCN only) _____
IPX E0 LAN network number _____
IPX LAN frame type (check one): Ethernet_II 802.3 802.2 SNAP
IPX E1 (1605) LAN network number _____
IPX LAN frame type (check one): Ethernet_II 802.3 802.2 SNAP

3 Troubleshooting

CD Fails to Launch Install Program

If the Cisco Fast Step setup wizard fails to launch when the CD is installed, follow these instructions:

Step 1 Double-click the **My Computer** icon.

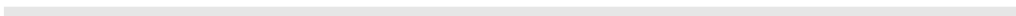
Step 2 Double-click the **CD** icon.

Step 3 Double-click the **Setup.exe** icon.

Step 4 Follow the on-screen instructions that guide you through router setup and test.

WinHelp CD and Web Buttons Fail

The Cisco Fast Step WinHelp system includes CD and Web buttons that display additional information on a selected topic using a Web browser. The CD buttons work correctly if the Cisco Documentation CD is installed and in your CD drive. Web buttons work correctly if you have an active connection to the Internet. For additional information, see “Using CD and Web Buttons” in the Cisco Fast Step On-line Help file. The file is in your Cisco Fast Step directory on your PC. It is not necessary to run Cisco Fast Step software to view the WinHelp topics. To view the help, double-click any file in the directory with a HLP extension.



**Corporate Headquarters**

Cisco Systems, Inc.
170 West Tasman Drive
San Jose, CA 95134-1706
USA
<http://www.cisco.com>
Tel: 408 526-4000
800 553-NETS (6387)
Fax: 408 526-4100

European Headquarters

Cisco Systems Europe s.a.r.l.
Parc Evolic, Batiment L1/L2
16 Avenue du Quebec
Villebon, BP 706
91961 Courtaboeuf Cedex
France
<http://www-europe.cisco.com>
Tel: 33 1 69 18 61 00
Fax: 33 1 69 28 83 26

**Americas
Headquarters**

Cisco Systems, Inc.
170 West Tasman Drive
San Jose, CA 95134-1706
USA
<http://www.cisco.com>
Tel: 408 526-7660
Fax: 408 527-0883

Asia Headquarters

Nihon Cisco Systems K.K.
Fuji Building, 9th Floor
3-2-3 Marunouchi
Chiyoda-ku, Tokyo 100
Japan
<http://www.cisco.com>
Tel: 81 3 5219 6250
Fax: 81 3 5219 6001

**Cisco Systems has more than 200 offices in the following countries. Addresses, phone numbers, and fax numbers are listed on the
Cisco Connection Online Web site at <http://www.cisco.com/offices>.**

Argentina • Australia • Austria • Belgium • Brazil • Canada • Chile • China • Colombia • Costa Rica • Croatia • Czech Republic • Denmark • Dubai, UAE • Finland • France
• Germany • Greece • Hong Kong • Hungary • India • Indonesia • Ireland • Israel • Italy • Japan • Korea • Luxembourg • Malaysia • Mexico • The Netherlands • New Zealand
• Norway • Peru • Philippines • Poland • Portugal • Puerto Rico • Romania • Russia • Saudi Arabia • Singapore • Slovakia • Slovenia • South Africa • Spain • Sweden •
Switzerland • Taiwan • Thailand • Turkey • Ukraine • United Kingdom • United States • Venezuela

<Paste in the current trademarks block here from the TM_JA.fm file.>



Printed in the USA on recycled paper containing 10% postconsumer waste.

78-5315-01