



Doc. No. 78-4996-01

Regulatory Compliance and Safety Information for the Cisco AccessPath-LS3 Integrated Access System

This publication provides international regulatory, safety compliance, and statutory information for the Cisco AccessPath-LS3 Integrated Access System product. This publication also provides translations for the safety warnings in the *Cisco AccessPath-LS3 Integrated Access System Hardware Installation and Configuration Guide* that shipped with your AccessPath-LS3 system.

Use the information in this publication in conjunction with the *Cisco AccessPath-LS3 Integrated Access System Hardware Installation and Configuration Guide*.

The following sections are included in this publication:

- Cisco AccessPath-LS3 Integrated Access System Overview, page 2
- General Safety Information, page 3
- Access Server Shelves Safety Information, page 4
- Console Router Shelf Safety Information, page 7
- Agency Approvals, page 10
- Translated Safety Warnings, page 11
- Cisco Connection Online, page 25

Note These publications, which are shipped with your order, are also available on the Cisco Connection Documentation CD-ROM, on the World Wide Web at <http://www.cisco.com>, <http://www-china.cisco.com>, <http://www-europe.cisco.com>. In addition, printed copies can be ordered.

Corporate Headquarters

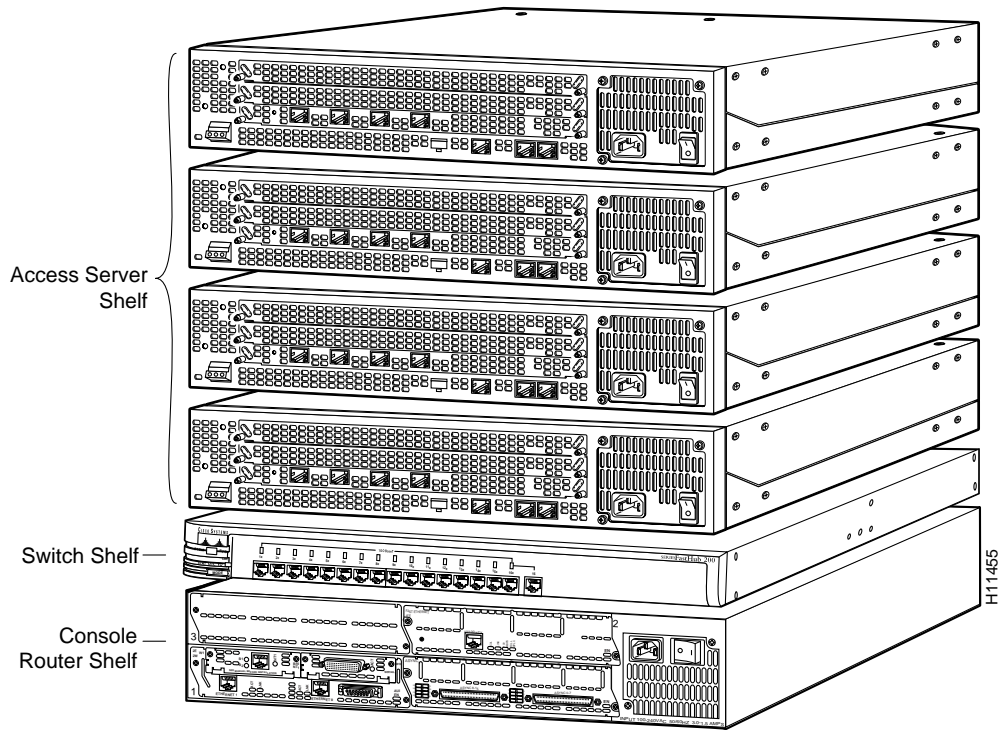
Cisco Systems, Inc.
170 West Tasman Drive
San Jose, CA 95134-1706
USA

Copyright © 1997
Cisco Systems, Inc.
All rights reserved.

Cisco AccessPath-LS3 Integrated Access System Overview

The Cisco AccessPath-LS3 Integrated Access System consists of a Cisco router, 1 to 4 Access Server Shelves, a Console Router Shelf, and a Switch Shelf. These components are rack-mountable in the configuration shown in Figure 1.

Figure 1 Cisco AccessPath-LS3 Integrated Access System



General Safety Information

The following statements are general safety guidelines for use when working with the Cisco AccessPath-LS3 Integrated Access System.

- The installation of your Cisco AccessPath-LS3 Integrated Access System should be in compliance with national and local electrical codes. In the United States, National Fire Protection Association (NFPA) 70, United States National Electrical Code. In Canada, Canadian Electrical Code, part I, CC22.1. In other countries, International Electrotechnical Commission (IEC) 364, part 1 through part 7.
- Review the safety warnings listed in this publication before installing, configuring, troubleshooting, or maintaining the AccessPath-LS3 system.
- Read the installation instructions before you connect the system to its power source.
- Never attempt to lift an object that might be too heavy for one person to lift alone.
- Always turn all power supplies off (O) and unplug all power cables for an AccessPath-LS3 system shelf before opening it.
- Keep the area clear and dust free during and after installation.
- Keep tools and chassis components away from walk areas.
- Do not wear loose clothing, jewelry (including rings and chains), or other items that could get caught in the chassis. Fasten your tie or scarf and roll up your sleeves.
- The Cisco AccessPath-LS3 Integrated Access System operates safely when it is used in accordance with its marked electrical ratings and product usage instructions.
- This product is intended for installation in a restricted access area. A restricted access area is where access can only be gained by service personnel through the use of a special tool, or lock and key, or other means of security, and is controlled by the authority responsible for the location.
- Secure all power cabling when installing these components to avoid disturbing field-wiring connections.
- This equipment is intended to be grounded. Ensure that each component is connected to earth ground during normal use.
- Network hazardous voltages are present in the T1 PRI cable. If you detach the cable, detach the end away from the access server first to avoid possible electric shock. Network hazardous voltages are also present in the area of the T1 PRI (RJ-48C) ports, regardless of whether power is off or on.
- Do not work on the system or connect or disconnect cables during periods of lightning activity.
- Do not touch the power supply when the power cord is connected. For systems with a power switch, line voltages are present within the power supply even when the power switch is off and the power cord is connected. For systems without a power switch, line voltages are present within the power supply when the power cord is connected.
- To prevent bodily injury when mounting or servicing these components in a rack, you must take special precautions to ensure that the system remains stable. The following guidelines are provided to ensure your safety:
 - This unit should be mounted at the bottom of the rack if it is the only unit in the rack.
 - When mounting this unit in a partially filled rack, load the rack from the bottom to the top with the heaviest component at the bottom of the rack.
 - If the rack is provided with stabilizing devices, install the stabilizers before mounting or servicing the unit in the rack.

- The ports labeled “Ethernet,” “10BaseT,” “Token Ring,” “Console,” and “AUX” are safety extra-low voltage (SELV) circuits. SELV circuits should only be connected to other SELV circuits. Because the BRI circuits are treated like telephone-network voltage, avoid connecting the SELV circuit to the telephone network voltage (TNV) circuits.
- Only trained and qualified personnel should be allowed to install or replace this equipment.
- Before working on equipment that is connected to power lines, remove jewelry (including rings, necklaces, and watches). Metal objects will heat up when connected to power and ground and can cause serious burns or weld the metal object to the terminals.

Access Server Shelves Safety Information

The following is specific warning and safety guideline information relating specifically to the Access Server Shelves.

56K Statement

Cisco AS5300 56K modem modules can send data at up to 56 kbps and receive data at up to 33.6 kbps. However, the actual speed that you can achieve with the module depends on the condition of your local telephone network.

Note Actual speeds vary depending on line conditions. Due to FCC limitations, speeds in the U.S. are less than 56 kbps.

AS53-4E1 Port Adapter Independent of Host

The Cisco Systems AS53-4E1 port adapter is a chassis-mounted processor/interface card for use within a range of data communication (gateway and router) chassis supplied by Cisco Systems. The AS53-4E1 is a self-contained product that provides all of the hardware and software necessary to allow connection of the Cisco AS5300 to structured digital leased line circuits (point to point) using CTR12 operating at 2 Mbps. The card can also be used on an open structured leased line; however, the framing cannot be disabled. The AS53-4E1 is also ICTR4 compliant for use on Primary Rate ISDN circuits operating at 2 Mbps. The AS53-4E1 is fully transportable between compatible host chassis. The choice of each compatible chassis has no effect on capabilities, functionality, or performance of the AS53-4E1.

The AS53-4E1 consists of the AS53-4E1 port adapter subassembly (Part Number 73-2218).

The AS53-4E1 provides capacity for a maximum of four serial port connections. Each port can provide connection to 2 Mbps leased lines or Primary Rate ISDN.

The card must be installed in accordance with the installation instructions provided.

When the AS53-4E1 is configured for 120-ohm balanced operation, the CE168 marking signifies that this product meets the European Directives 94/821/EC and 94/796/EC. In the 75-ohm configuration, the AS53-4E1 is in compliance with the UK national standard NTR4.

FCC Registration and Requirements

The following paragraphs describe requirements and information based on FCC rules.

FCC Rules, Part 15

The Cisco AS5300 has been tested and complied with the limits for a Class A digital device, pursuant to part 15 of the FCC Rules. These limits are designed to provide reasonable protection against harmful interference when the equipment is operated in a commercial environment. This equipment generates, uses, and can radiate radio-frequency energy and, if not installed and used in accordance with the instruction manual, can cause harmful interference to radio communications. Operation of this equipment in a residential area is likely to cause harmful interference, in which case the user will be required to correct the interference at the user's expense.

CHANGES OR MODIFICATIONS NOT EXPRESSLY APPROVED BY CISCO SYSTEMS, INC. COULD VOID THE USER'S AUTHORITY TO OPERATE THE EQUIPMENT.

FCC Rules, Part 68

1 FCC Part 68 Registration

The Cisco AS5300 System complies with FCC Rules, Part 68. On the cover of this equipment is a label that contains, among other information, the FCC Part 68 registration number.

2 REN

The ringer equivalence number (REN) is used to determine the quality of devices which may be connected to the telephone line. Excessive RENs on the telephone line may result in the devices not ringing in response to an incoming call. In most, but not all areas, the sum of RENs should not exceed five (5.0). To be certain of the number of devices that may be connected to a line, as determined by the total RENs, contact the local telephone company. The REN is not applicable to digital interfaces.

3 Service

In the event of equipment malfunction, all repairs should be performed by Cisco Systems or an authorized agent. It is the responsibility of users requiring service to report the need for service to Cisco Systems or to one of our authorized agents. Service can be facilitated through our office at:

Cisco Systems, Inc.
170 West Tasman Drive
San Jose, CA 95134-4567
Telephone: 800 553-2447

The telephone company can ask you to disconnect the equipment from the network until the problem is corrected or until you are sure that the equipment is not malfunctioning.

4 Facility Interface Information

In order to connect registered terminal equipment to the telephone company lines, the terminal equipment must utilize FCC registered jacks. Standardized jacks are used for this equipment. The following table contains Digital Interface Code (FIC), Service Order Code (SOC), and network information for the equipment.

Manufacturer Port Identifier	Digital Interface Code (FIC)	Service Order Code (SOC)	Network Jack
AS53-4CT1	04DU9-BN	6.0Y	RJ48C
AS53-4CT1	04DU9-DN	6.0Y	RJ48C
AS53-4CT1	04DU9-1KN	6.0Y	RJ48C
AS53-4CT1	04DU9-1SN	6.0Y	RJ48C

5 Disruption of the Network

If the Cisco AS5300 disrupts the telephone network, the telephone company can discontinue your service temporarily. If possible, the telephone company will notify you in advance. If advance notice is not practical, they will notify you as soon as possible. You are also informed of your right to file a complaint with the FCC.

6 Telephone Company Facility Changes

The telephone company can make changes in its facilities, equipment, operations, or procedures that can affect the operation of your equipment. If they do, you should be notified in advance so you have an opportunity to maintain uninterrupted telephone service.

7 Electrical Safety Advisory

While the Cisco AS5300 is fully compliant with FCC rules and regulations, it is recommended that an alternating current (ac) surge arrestor of the form and capability suitable for the model purchased be installed in the ac outlet to which the Cisco AS5300 System is connected. Consult with your distributor as to the surge protector requirements for your equipment.

Industry Canada Compliance

The following are notices required by Industry Canada Terminal Attachment Program Certification Procedure CP-01, Part I, Section 14.

Ringer Equivalence Number

The Ringer Equivalence Number (REN) assigned to each terminal device provides an indication of the maximum number of terminals allowed to be connected to a telephone interface. The termination on an interfaced may consist of any combination of devices subject only to the requirement that the sum of Ringer Equivalence Numbers of all the devices does not exceed 5.

Equipment Attachment Limitations

The Industry Canada label identifies certified equipment. This certification means that the equipment meets certain telecommunications network protective operational and safety requirements. The Department does not guarantee the equipment will operate to the user's satisfaction.

Before installing the equipment, users should ensure that it is permissible to be connected to the facilities of the local telecommunications company. The equipment must also be installed using an acceptable method of connection. In some cases, the company's inside wiring associated with a

single line individual service may be extended by means of a certified connector assembly (telephone extension cord). The customer should be aware that compliance with the above conditions may not prevent degradation of service in some situations.

Repairs to certified equipment should be made by an authorized Canadian maintenance facility designated by the supplier. Any repairs or alterations made by the user to this equipment, or equipment malfunctions, may give the telecommunications company cause to request the user to disconnect the equipment.

Users should ensure for their own protection that the electrical ground connections of the power utility, telephone lines and internal metallic water pipe system, if present, are connected together. This precaution may be particularly important in rural areas.



Caution Users should not attempt to make such connections themselves, but should contact the appropriate electric inspection authority, or electrician, as appropriate.

Console Router Shelf Safety Information

The following is specific warning and safety guideline information relating specifically to the Console Router Shelf.

Serial WAN Interface Card Independent of Host

The serial WAN interface card is an interface card assembly for use within a range of data communication (gateway and router) chassis supplied by Cisco Systems throughout Europe.

The serial WAN interface card mounts in either of the two slots available in a 1 Ethernet 2 WAN Card Slot Network Module, a 2 Ethernet 2 WAN Card Slot Network Module, or a 1 Ethernet 1 Token Ring 2 WAN Card Slot Network Module. When mounted in one of the network modules, the serial WAN interface card provides all of the hardware necessary to allow connection of Cisco Systems' chassis to either Digital leased line circuits (point to point) or to Packet Switched Public Data Networks (PSPDN).

The software is downloaded from a separate memory card installed in any Cisco compatible host.

The serial WAN interface card is fully transportable between compatible "host" chassis. The choice of each compatible chassis does not effect the capabilities, functionality, or performance of the serial WAN interface card.

The serial WAN interface card consists of the following subassemblies:

- 1T WAN module (part number 73-1775)

The serial WAN interface card, when installed in a WAN card slot network module, is a self-contained data communication device that provides one serial port connection. The port can provide connection to leased line or packet switched services of the type X.21, V.24, V.35, and V.36. The serial WAN interface card provides all of the hardware necessary for supporting Packet Switched Public Data Network communications. The wide-area networking (WAN) operating software (designated as the X.25 Version 2.0), is downloaded from the storage medium by the Cisco compatible host.

The serial port on the 5 in 1 Serial Port Adapter uses a custom 60-pin connector. The following port configurations are supported:

- X.21 port for connection to leased lines at up to 2048 kbps or X.25 Packet Switched service at up to 64 kbps.

- V.24 port for connection to X.21bis leased lines or X.25 Packet Switched service at up to 19.2 kbps.
- V.35 port for connection to X.21bis leased lines or X.25 Packet Switched service at up to 64 kbps.
- V.36 port for connection to X.25 Packet Switched service at up to 64 kbps.

The final configuration of the serial interface is dependent on the Serial Port Adapter Cable used. The serial WAN interface card incorporates cable sensing circuitry to detect the presence of a specific adapter cable for each service. Further configuration is not necessary. Custom adapter cables are supplied with the apparatus and are as follows.

- X.21 Adapter Cable: part number 72-0790
- V.24 Adapter Cable: part number 72-0793
- V.35 Adapter Cable: part number 72-0791
- V.36 Adapter Cable: part number 72-0795

Each cable provides a connection from a 60-pin custom connector to the applicable ISO standard connector.

X.25 Support

X.25 Packet switched support is provided by the operating software resident in the Cisco compatible chassis. This software is designated as the X.25 Version 2.0. This software provides both the link and packet level facilities of the serial WAN interface card.

The operating software is accessed through a VT100 terminal connected to the console port of the host. The settings of the terminal should be as follows:

- Baud: 9600
- Data bits: 8
- Parity: None
- Stop bits: 1

Operating Conditions for Canada

In addition to the warnings and safety guidelines listed in the section “Safety Information,” the following warnings apply to models used in Canada:

- The Canadian Department of Communications label identifies certified equipment. This certification means that the equipment meets certain telecommunications network protective operational and safety requirements. The Department does not guarantee the equipment will operate to the user's satisfaction.
- Before installing the equipment, users should ensure that it is permissible to be connected to the facilities of the local telecommunications company. The equipment must also be installed using an acceptable method of connection. In some cases, the company's inside wiring associated with a single line individual service may be extended by means of a certified connector assembly (telephone extension cord). The customer should be aware that compliance with the preceding conditions may not prevent degradation of service in some situations.
- Repairs to certified equipment should be made by an authorized Canadian maintenance facility designated by the supplier. Any repairs or alterations made by the user to this equipment, or equipment malfunctions, may give the telecommunications company cause to request the user to disconnect the equipment.

- Users should ensure for their own protection that the electrical ground connections of the power utility, telephone lines, and internal metallic water pipe system, if present, are connected together. This precaution may be particularly important in rural areas.



Caution Users should not attempt to make such connections themselves, but should contact the appropriate electric inspection authority, or electrician, as appropriate.

Operating Conditions for the United Kingdom

Cisco Systems declaration of operating conditions:

The Cisco 3640 router is designed to meet the requirements of NET1 and NET2.

Warnings

This section gives warnings that apply to the Cisco 3640 router.

- Interconnection directly, or by way of other apparatus, of ports marked:
“Safety Warning --- See instructions for use” with ports marked or not so marked may produce hazardous conditions on the network and that advice should be obtained from a competent engineer before such a connection is made.
- The ports marked “Ethernet,” “10BaseT,” “Token Ring,” “Console,” and “AUX” have a safety warning applied to them as follows:
“These ports do not provide isolation sufficient to satisfy the requirement of BS6301; apparatus connected to these ports should either have been approved to BS6301 or have previously been evaluated against British Telecommunications plc (Post Office) Technical Guides 2 or 26 and given permission to attach; any other usage will invalidate any approval given to this apparatus.”

Connection of Power Supply. The router is intended for use when supplied with power from a supply providing 220-240 VAC, 50/60 Hz up to 5 Amps.

Other usage will invalidate any approval given to this apparatus if as a result it ceases to comply with BS6301: 1989.

The Cisco 3640 router is brought into service by the supplier.

Operating Conditions for the European Community

The following operating conditions are required within the European Community.

- The ports marked “Ethernet,” “10BaseT,” “Token Ring,” “Console,” and “AUX” are SELV circuits.
- SELV circuits should only be connected to other SELV circuits.

Agency Approvals

Agency approvals for the Cisco AccessPath-LS3 Integrated Access System are outlined in Table 1.

Table 1 Agency Approvals

AccessPath-LS3 Shelf	Approval Type	Classification
Console Router Shelf (Cisco 3640 Router)	Safety	UL 1950, CSA 950-M95, EN60950, AS/NZS3260, TS001
	EMI	FCC Class B, Canadian DOC Class A PTT: CS-03, FCC Part 68
Access Server Shelf (Cisco AS5300 Universal Access Server)	Safety	UL1950, Third Edition; CAN/CSA 22.2 No. 950-95, Third Edition; EN 60950 with Amendments 1, 2, 3, and 4; IEC 950 with Amendments 1, 2, 3, and 4; AS/NZS 3260 and TS001
	EMI	PTT:CTR4 (NET5), CTR12/13, JATE, TS 014, BE/SP-103, T14-03, SS63 63 34, PD 7024, HKT CR11, HKT CR13, FCC Part 68, Industry Canada DOC CS-03 EMI: FCC Part 15, 1994; CSA Standard C108.8, 1993; VCCI, 1995; AS/NRZ 3548, 1992; EN 55022, 1995; EN 50081-1, 1992; EN 50082-1, 1992
Switch Shelf FastHub 216T	Safety	UL 1950, CSA-C22.2 No. 950, EN60950, IEC950, TS001, NOM019, AS/ZNS 3260
	EMI	FCC Part 15, Class B, EN55022B Class B, CISPR22 Class B, AS/NZS 3548 Class B, and VCCI Class II

Translated Safety Warnings

This section includes translations in multiple languages of the warnings that appear in the installation documentation that shipped with the Cisco AccessPath-LS3 Integrated Access System. Before working on equipment, be aware of the hazards involved with electrical circuitry and standard safety practices to prevent accidents.

Warning Definition



Warning This warning symbol means *danger*. You are in a situation that could cause bodily injury. Before you work on any equipment, be aware of the hazards involved with electrical circuitry and be familiar with standard practices for preventing accidents.

Waarschuwing Dit waarschuwingssymbool betekent gevaar. U verkeert in een situatie die lichamelijk letsel kan veroorzaken. Voordat u aan enige apparatuur gaat werken, dient u zich bewust te zijn van de bij elektrische schakelingen betrokken risico's en dient u op de hoogte te zijn van standaard maatregelen om ongelukken te voorkomen.

Varoitus Tämä varoitusmerkki merkitsee vaaraa. Olet tilanteessa, joka voi johtaa ruumiinvammaan. Ennen kuin työskentelet minkään laitteiston parissa, ota selvää sähkökytkentöihin liittyvistä vaaroista ja tavanomaisista onnettomuuksien ehkäisykeinoista.

Attention Ce symbole d'avertissement indique un danger. Vous vous trouvez dans une situation pouvant causer des blessures ou des dommages corporels. Avant de travailler sur un équipement, soyez conscient des dangers posés par les circuits électriques et familiarisez-vous avec les procédures couramment utilisées pour éviter les accidents.

Warnung Dieses Warnsymbol bedeutet Gefahr. Sie befinden sich in einer Situation, die zu einer Körperverletzung führen könnte. Bevor Sie mit der Arbeit an irgendeinem Gerät beginnen, seien Sie sich der mit elektrischen Stromkreisen verbundenen Gefahren und der Standardpraktiken zur Vermeidung von Unfällen bewusst.

Avvertenza Questo simbolo di avvertenza indica un pericolo. La situazione potrebbe causare infortuni alle persone. Prima di lavorare su qualsiasi apparecchiatura, occorre conoscere i pericoli relativi ai circuiti elettrici ed essere al corrente delle pratiche standard per la prevenzione di incidenti.

Advarsel Dette varselsymbolet betyr fare. Du befinner deg i en situasjon som kan føre til personskade. Før du utfører arbeid på utstyr, må du være oppmerksom på de faremomentene som elektriske kretser innebærer, samt gjøre deg kjent med vanlig praksis når det gjelder å unngå ulykker.

Aviso Este símbolo de aviso indica perigo. Encontra-se numa situação que lhe poderá causar danos físicos. Antes de começar a trabalhar com qualquer equipamento, familiarize-se com os perigos relacionados com circuitos eléctricos, e com quaisquer práticas comuns que possam prevenir possíveis acidentes.

¡Atención! Este símbolo de aviso significa peligro. Existe riesgo para su integridad física. Antes de manipular cualquier equipo, considerar los riesgos que entraña la corriente eléctrica y familiarizarse con los procedimientos estándar de prevención de accidentes.

Varning! Denna varningssymbol signalerar fara. Du befinner dig i en situation som kan leda till personskada. Innan du utför arbete på någon utrustning måste du vara medveten om farorna med elkretsar och känna till vanligt förfarande för att förebygga skador.

Jewelry Removal Warning



Warning Before working on equipment that is connected to power lines, remove jewelry (including rings, necklaces, and watches). Metal objects will heat up when connected to power and ground and can cause serious burns or weld the metal object to the terminals.

Waarschuwing Alvorens aan apparatuur te werken die met elektrische leidingen is verbonden, sieraden (inclusief ringen, kettingen en horloges) verwijderen. Metalen voorwerpen worden warm wanneer ze met stroom en aarde zijn verbonden, en kunnen ernstige brandwonden veroorzaken of het metalen voorwerp aan de aansluitklemmen lassen.

Varoitus Ennen kuin työskentelet voimavirtajohtoihin kytkettyjen laitteiden parissa, ota pois kaikki korut (sormukset, kaulakorut ja kellot mukaan lukien). Metalliesineet kuumenevat, kun ne ovat yhteydessä sähkövirran ja maan kanssa, ja ne voivat aiheuttaa vakavia palovammoja tai hitsata metalliesineet kiinni liitäntänapoihin.

Attention Avant d'accéder à cet équipement connecté aux lignes électriques, ôter tout bijou (anneaux, colliers et montres compris). Lorsqu'ils sont branchés à l'alimentation et reliés à la terre, les objets métalliques chauffent, ce qui peut provoquer des blessures graves ou souder l'objet métallique aux bornes.

Warnung Vor der Arbeit an Geräten, die an das Netz angeschlossen sind, jeglichen Schmuck (einschließlich Ringe, Ketten und Uhren) abnehmen. Metallgegenstände erhitzen sich, wenn sie an das Netz und die Erde angeschlossen werden, und können schwere Verbrennungen verursachen oder an die Anschlußklemmen angeschweißt werden.

Avvertenza Prima di intervenire su apparecchiature collegate alle linee di alimentazione, togliersi qualsiasi monile (inclusi anelli, collane, braccialetti ed orologi). Gli oggetti metallici si riscaldano quando sono collegati tra punti di alimentazione e massa: possono causare ustioni gravi oppure il metallo può saldarsi ai terminali.

Advarsel Fjern alle smykker (inkludert ringer, halskjeder og klokker) før du skal arbeide på utstyr som er koblet til kraftledninger. Metallgjenstander som er koblet til kraftledninger og jord blir svært varme og kan forårsake alvorlige brannskader eller smelte fast til polene.

Aviso Antes de trabalhar em equipamento que esteja ligado a linhas de corrente, retire todas as jóias que estiver a usar (incluindo anéis, fios e relógios). Os objectos metálicos aquecerão em contacto com a corrente e em contacto com a ligação à terra, podendo causar queimaduras graves ou ficarem soldados aos terminais.

¡Advertencia! Antes de operar sobre equipos conectados a líneas de alimentación, quitarse las joyas (incluidos anillos, collares y relojes). Los objetos de metal se calientan cuando se conectan a la alimentación y a tierra, lo que puede ocasionar quemaduras graves o que los objetos metálicos queden soldados a los bornes.

Varning! Tag av alla smycken (inklusive ringar, halsband och armbandsur) innan du arbetar på utrustning som är kopplad till kraftledningar. Metallobjekt hettas upp när de kopplas ihop med ström och jord och kan förorsaka allvarliga brännskador; metallobjekt kan också sammansvetsas med kontaktarna.

Power Supply Disconnection Warning



Warning Before working on a chassis or working near power supplies, unplug the power cord on AC units; disconnect the power at the circuit breaker on DC units.

Waarschuwing Voordat u aan een frame of in de nabijheid van voedingen werkt, dient u bij wisselstroom toestellen de stekker van het netsnoer uit het stopcontact te halen; voor gelijkstroom toestellen dient u de stroom uit te schakelen bij de stroomverbreker.

Varoitus Kytke irti vaihtovirtalaitteiden virtajohto ja katkaise tasavirtalaitteiden virta suojakytkimellä, ennen kuin teet mitään asennuspohjalle tai työskentelet virtalähteiden läheisyydessä.

Attention Avant de travailler sur un châssis ou à proximité d'une alimentation électrique, débrancher le cordon d'alimentation des unités en courant alternatif ; couper l'alimentation des unités en courant continu au niveau du disjoncteur.

Warnung Bevor Sie an einem Chassis oder in der Nähe von Netzgeräten arbeiten, ziehen Sie bei Wechselstromeinheiten das Netzkabel ab bzw. schalten Sie bei Gleichstromeinheiten den Strom am Unterbrecher ab.

Avvertenza Prima di lavorare su un telaio o intorno ad alimentatori, scollegare il cavo di alimentazione sulle unità CA; scollegare l'alimentazione all'interruttore automatico sulle unità CC.

Advarsel Før det utføres arbeid på kabinettet eller det arbeides i nærheten av strømforsyningsenheter, skal strømledningen trekkes ut pCE vekselstrømsenheter og strømmen kobles fra ved strømbryteren på likestrømsenheter.

Aviso Antes de trabalhar num chassis, ou antes de trabalhar perto de unidades de fornecimento de energia, desligue o cabo de alimentação nas unidades de corrente alternada; desligue a corrente no disjuntor nas unidades de corrente contínua.

¡Advertencia! Antes de manipular el chasis de un equipo o trabajar cerca de una fuente de alimentación, desenchufar el cable de alimentación en los equipos de corriente alterna (CA); cortar la alimentación desde el interruptor automático en los equipos de corriente continua (CC).

Warning! Innan du arbetar med ett chassi eller nära strömförsörjningsenheter skall du för växelströmsenheter dra ur nätsladden och för likströmsenheter bryta strömmen vid överspänningsskyddet.

Power Supply Warning



Warning Do not touch the power supply when the power cord is connected. For systems with a power switch, line voltages are present within the power supply even when the power switch is off and the power cord is connected. For systems without a power switch, line voltages are present within the power supply when the power cord is connected.

Waarschuwing U dient de voeding niet aan te raken zolang het netsnoer aangesloten is. Bij systemen met een stroomschakelaar zijn er lijnspanningen aanwezig in de voeding, zelfs wanneer de stroomschakelaar uitgeschakeld is en het netsnoer aangesloten is. Bij systemen zonder een stroomschakelaar zijn er lijnspanningen aanwezig in de voeding wanneer het netsnoer aangesloten is.

Varoitus Älä kosketa virtalähdettä virtajohdon ollessa kytkettynä. Virrankatkaisimella varustetuissa järjestelmissä on virtalähteen sisällä jäljellä verkkojännite, vaikka virrankatkaisin on katkaistu-asennossa virtajohdon ollessa kytkettynä. Järjestelmissä, joissa ei ole virrankatkaisinta, on virtalähteen sisällä verkkojännite, kun virtajohto on kytkettynä.

Attention Ne pas toucher le bloc d'alimentation quand le cordon d'alimentation est branché. Avec les systèmes munis d'un commutateur marche-arrêt, des tensions de ligne sont présentes dans l'alimentation quand le cordon est branché, même si le commutateur est à l'arrêt. Avec les systèmes sans commutateur marche-arrêt, l'alimentation est sous tension quand le cordon d'alimentation est branché.

Warnung Berühren Sie das Netzgerät nicht, wenn das Netzkabel angeschlossen ist. Bei Systemen mit Netzschalter liegen Leitungsspannungen im Netzgerät vor, wenn das Netzkabel angeschlossen ist, auch wenn das System ausgeschaltet ist. Bei Systemen ohne Netzschalter liegen Leitungsspannungen im Netzgerät vor, wenn das Netzkabel angeschlossen ist.

Avvertenza Non toccare l'alimentatore se il cavo dell'alimentazione è collegato. Per i sistemi con un interruttore di alimentazione, tensioni di linea sono presenti all'interno dell'alimentatore anche quando l'interruttore di alimentazione è in posizione di disattivazione (off), se il cavo dell'alimentazione è collegato. Per i sistemi senza un interruttore, tensioni di linea sono presenti all'interno dell'alimentatore quando il cavo di alimentazione è collegato.

Advarsel Berør ikke strømforsyningsenheden når strømledningen er tilkoblet. I systemer som har en strømbryter, er det spenning i strømforsyningsenheden selv om strømbryteren er slått av og strømledningen er tilkoblet. Når det gjelder systemer uten en strømbryter, er det spenning i strømforsyningsenheden når strømledningen er tilkoblet.

Aviso Não toque na unidade abastecedora de energia quando o cabo de alimentação estiver ligado. Em sistemas com interruptor, a corrente eléctrica estará presente na unidade abastecedora, sempre que o cabo de alimentação de energia estiver ligado, mesmo quando o interruptor se encontrar desligado. Para sistemas sem interruptor, a tensão eléctrica dentro da unidade abastecedora só estará presente quando o cabo de alimentação estiver ligado.

¡Advertencia! No tocar la fuente de alimentación mientras el cable esté enchufado. En sistemas con interruptor de alimentación, hay voltajes de línea dentro de la fuente, incluso cuando el interruptor esté en Apagado (OFF) y el cable de alimentación enchufado. En sistemas sin interruptor de alimentación, hay voltajes de línea en la fuente cuando el cable está enchufado.

Warning! Vidrör inte strömförsörjningsenheden när nätsladden är ansluten. För system med strömbrytare finns det nätspänning i strömförsörjningsenheden även när strömmen har slagits av men nätsladden är ansluten. För system utan strömbrytare finns det nätspänning i strömförsörjningsenheden när nätsladden är ansluten.

Grounded Equipment Warning



Warning This equipment is intended to be grounded. Ensure that the host is connected to earth ground during normal use.

Waarschuwing Deze apparatuur hoort geaard te worden. Zorg dat de host-computer tijdens normaal gebruik met aarde is verbonden.

Varoitus Tämä laitteisto on tarkoitettu maadoitettavaksi. Varmista, että isäntälaitte on yhdistetty maahan normaalikäytön aikana.

Attention Cet équipement doit être relié à la terre. S'assurer que l'appareil hôte est relié à la terre lors de l'utilisation normale.

Warnung Dieses Gerät muß geerdet werden. Stellen Sie sicher, daß das Host-Gerät während des normalen Betriebs an Erde gelegt ist.

Avvertenza Questa apparecchiatura deve essere collegata a massa. Accertarsi che il dispositivo host sia collegato alla massa di terra durante il normale utilizzo.

Advarsel Dette utstyret skal jordes. Forviss deg om vertsterminalen er jordet ved normalt bruk.

Aviso Este equipamento deverá estar ligado à terra. Certifique-se que o host se encontra ligado à terra durante a sua utilização normal.

¡Advertencia! Este equipo debe conectarse a tierra. Asegurarse de que el equipo principal esté conectado a tierra durante el uso normal.

Warning! Denna utrustning är avsedd att jordas. Se till att värdenheten är jordad vid normal användning.

Ground Connection Warning



Warning When installing the unit, the ground connection must always be made first and disconnected last.

Waarschuwing Bij de installatie van het toestel moet de aardverbinding altijd het eerste worden gemaakt en het laatste worden losgemaakt.

Varoitus Laitetta asennettaessa on maahan yhdistäminen aina tehtävä ensiksi ja maadoituksen irti kytkeminen viimeiseksi.

Attention Lors de l'installation de l'appareil, la mise à la terre doit toujours être connectée en premier et déconnectée en dernier.

Warnung Der Erdanschluß muß bei der Installation der Einheit immer zuerst hergestellt und zuletzt abgetrennt werden.

Avvertenza In fase di installazione dell'unità, eseguire sempre per primo il collegamento a massa e disconnetterlo per ultimo.

Advarsel Når enheten installeres, må jordledningen alltid tilkobles først og frakobles sist.

Aviso Ao instalar a unidade, a ligação à terra deverá ser sempre a primeira a ser ligada, e a última a ser desligada.

¡Advertencia! Al instalar el equipo, conectar la tierra la primera y desconectarla la última.

Warning! Vid installation av enheten måste jordledningen alltid anslutas först och kopplas bort sist.

Installation Warning



Warning Read the installation instructions before you connect the system to its power source.

Waarschuwing Raadpleeg de installatie-aanwijzingen voordat u het systeem met de voeding verbindt.

Varoitus Lue asennusohjeet ennen järjestelmän yhdistämistä virtalähteeseen.

Attention Avant de brancher le système sur la source d'alimentation, consulter les directives d'installation.

Warnung Lesen Sie die Installationsanweisungen, bevor Sie das System an die Stromquelle anschließen.

Avvertenza Consultare le istruzioni di installazione prima di collegare il sistema all'alimentatore.

Advarsel Les installasjonsinstruksjonene før systemet kobles til strømkilden.

Aviso Leia as instruções de instalação antes de ligar o sistema à sua fonte de energia.

¡Advertencia! Ver las instrucciones de instalación antes de conectar el sistema a la red de alimentación.

Warning! Läs installationsanvisningarna innan du kopplar systemet till dess strömförsörjningsenhet.

SELV Circuit Warning



Warning To avoid electric shock, do not connect safety extra-low voltage (SELV) circuits to telephone-network voltage (TNV) circuits. LAN ports contain SELV circuits, and WAN ports contain TNV circuits. Some LAN and WAN ports both use RJ-45 connectors. Use caution when connecting cables.

Waarschuwing Om elektrische schokken te vermijden, mogen veiligheidscircuits met extra lage spanning (genaamd SELV = Safety Extra-Low Voltage) niet met telefoonnetwerkspanning (TNV) circuits verbonden worden. LAN (Lokaal netwerk) poorten bevatten SELV circuits en WAN (Regionaal netwerk) poorten bevatten TNV circuits. Sommige LAN en WAN poorten gebruiken allebei RJ-45 connectors. Ga voorzichtig te werk wanneer u kabels verbindt.

Varoitus Jotta välttyt sähköiskulta, älä kytke pienjännitteisiä SELV-suojapiirejä puhelinverkkojännitettä (TNV) käyttöviin virtapiireihin. LAN-portit sisältävät SELV-piirejä ja WAN-portit puhelinverkkojännitettä käyttöviä piirejä. Osa sekä LAN- että WAN-porteista käyttää RJ-45-liittimiä. Ole varovainen kytkiessäsi kaapeleita.

Attention Pour éviter une électrocution, ne raccordez pas les circuits de sécurité basse tension (Safety Extra-Low Voltage ou SELV) à des circuits de tension de réseau téléphonique (Telephone Network Voltage ou TNV). Les ports du réseau local (LAN) contiennent des circuits SELV et les ports du réseau longue distance (WAN) sont munis de circuits TNV. Certains ports LAN et WAN utilisent des connecteurs RJ-45. Raccordez les câbles en prenant toutes les précautions nécessaires.

Warnung Zur Vermeidung von Elektroschock die Sicherheits-Kleinspannungs-Stromkreise (SELV-Kreise) nicht an Fernsprechnetzspannungs-Stromkreise (TNV-Kreise) anschließen. LAN-Ports enthalten SELV-Kreise, und WAN-Ports enthalten TNV-Kreise. Einige LAN- und WAN-Ports verwenden auch RJ-45-Steckverbinder. Vorsicht beim Anschließen von Kabeln.

Avvertenza Per evitare scosse elettriche, non collegare circuiti di sicurezza a tensione molto bassa (SELV) ai circuiti a tensione di rete telefonica (TNV). Le porte LAN contengono circuiti SELV e le porte WAN contengono circuiti TNV. Alcune porte LAN e WAN fanno uso di connettori RJ-45. Fare attenzione quando si collegano cavi.

Advarsel Unngå å koble lavspenningskretser (SELV) til kretser for telenettspenning (TNV), slik at du unngår elektrisk støt. LAN-utganger inneholder SELV-kretser og WAN-utganger inneholder TNV-kretser. Det finnes både LAN-utganger og WAN-utganger som bruker RJ-45-kontakter. Vær forsiktig når du kobler kabler.

Aviso Para evitar choques eléctricos, não conecte os circuitos de segurança de baixa tensão (SELV) aos circuitos de tensão de rede telefónica (TNV). As portas LAN contêm circuitos SELV e as portas WAN contêm circuitos TNV. Algumas portas LAN e WAN usam conectores RJ-45. Tenha o devido cuidado ao conectar os cabos.

¡Advertencia! Para evitar la sacudida eléctrica, no conectar circuitos de seguridad de voltaje muy bajo (safety extra-low voltage = SELV) con circuitos de voltaje de red telefónica (telephone network voltage = TNV). Los puertos de redes de área local (local area network = LAN) contienen circuitos SELV, y los puertos de redes de área extendida (wide area network = WAN) contienen circuitos TNV. En algunos casos, tanto los puertos LAN como los WAN usan conectores RJ-45. Proceda con precaución al conectar los cables.

Warning! För att undvika elektriska stötar, koppla inte säkerhetskretsar med extra låg spänning (SELV-kretsar) till kretsar med telefonnätspänning (TNV-kretsar). LAN-portar innehåller SELV-kretsar och WAN-portar innehåller TNV-kretsar. Vissa LAN- och WAN-portar är försedda med RJ-45-kontakter. Iaktta försiktighet vid anslutning av kablar.

Hazardous Voltages in WAN Ports



Warning Hazardous network voltages are present in WAN ports regardless of whether power to the router is OFF or ON. To avoid electric shock, use caution when working near WAN ports. When detaching cables, detach the end away from the router first.

Waarschuwing Er is gevaarlijke netwerkspanning aanwezig in WAN poorten ongeacht of de stroom naar de router INGESCHAKELD of UITGESCHAKELD is. Om elektrische schokken te vermijden, dient u voorzichtig te werk te gaan wanneer u in de nabijheid van WAN poorten werkt. Wanneer u kabels losmaakt, dient u eerst het uiteinde dat zich het verst van de router vandaan bevindt, te verwijderen.

Varoitus WAN-porteissa on vaarallisia verkkojännitteitä riippumatta siitä, onko reitittimen virta kytketty vai ei. Välttyäksesi sähköiskulta ole varovainen työskennellessäsi WAN-porttien lähetyvillä. Kun irrotat kaapeleita, irrota reitittimestä kauempana sijaitseva pää ensiksi.

Attention Les ports de réseau longue distance (WAN) gèrent des tensions de réseau dangereuses, que le routeur soit sous tension ou pas. Pour éviter tout risque d'électrocution, prenez toutes les précautions nécessaires avant de travailler à proximité des ports WAN. Pour déconnecter les câbles, commencez par débrancher l'extrémité la plus éloignée du routeur.

Warnung In WAN-Ports sind gefährliche Netzspannungen vorhanden, auch wenn der Strom zum Router abgeschaltet wurde. Zur Vermeidung von Elektroschock Vorsicht bei der Arbeit in der Nähe von WAN-Ports. Beim Abtrennen von Kabeln zuerst das vom Router entfernte Ende lösen.

Avvertenza Nelle porte WAN sono presenti tensioni di rete pericolose, sia che il router sia acceso o meno (ON od OFF). Per evitare scosse elettriche, fare attenzione quando si lavora in prossimità di porte WAN. Quando si scollegano cavi, staccare per primo il connettore collegato al router.

Advarsel Det er livsfarlig nettverksspenning i WAN-utganger, uavhengig av om strømmen til fordelingsenheten er slått av (OFF) eller på (ON). Vær forsiktig når du jobber nær WAN-utganger slik at du unngår elektrisk støt. Hvis du skal løsne kabler, må du først løsne den enden som er lengst borte fra fordelingsenheten.

Aviso Existem sempre tensões de rede perigosas nas portas WAN, independentemente da corrente para o dispositivo repartidor de mensagens estar ligada (ON) ou desligada (OFF). Para evitar choques eléctricos, tenha o devido cuidado ao trabalhar perto das portas WAN. Ao desconectar os cabos, separe primeiro a extremidade que se encontra ligada ao dispositivo repartidor de mensagens.

¡Advertencia! Hay tensiones de red peligrosas en los puertos de redes de área extendida (WAN), tanto con la alimentación al router conectada como desconectada. Para evitar la sacudida eléctrica, proceda con precaución cuando trabaje en las proximidades de puertos WAN. Para desconectar los cables, desconecte primero el extremo que va al router.

Warning! Farlig nätverksspänning föreligger i WAN-portarna oavsett om strömförsörjningen till distributören är bruten eller ej. För att undvika elektriska stötar ska du vara försiktig vid arbete i närheten av dessa portar. När du kopplar bort en kabel ska du först koppla bort den ände som inte är ansluten till distributören.

Qualified Personnel Warning



Warning Only trained and qualified personnel should be allowed to install or replace this equipment.

Waarschuwing Installatie en reparaties mogen uitsluitend door getraind en bevoegd personeel uitgevoerd worden.

Varoitus Ainoastaan koulutettu ja pätevä henkilökunta saa asentaa tai vaihtaa tämän laitteen.

Avertissement Tout installation ou remplacement de l'appareil doit être réalisé par du personnel qualifié et compétent.

Achtung Gerät nur von geschultem, qualifiziertem Personal installieren oder auswechseln lassen.

Avvertenza Solo personale addestrato e qualificato deve essere autorizzato ad installare o sostituire questo apparecchio.

Advarsel Kun kvalifisert personell med riktig opplæring bør montere eller bytte ut dette utstyret.

Aviso Este equipamento deverá ser instalado ou substituído apenas por pessoal devidamente treinado e qualificado.

¡Atención! Estos equipos deben ser instalados y reemplazados exclusivamente por personal técnico adecuadamente preparado y capacitado.

Warning Denna utrustning ska endast installeras och bytas ut av utbildad och kvalificerad personal.

TN Power Warning



Warning The device is designed to work with TN power systems.

Waarschuwing Het apparaat is ontworpen om te functioneren met TN energiesystemen.

Varoitus Koje on suunniteltu toimimaan TN-sähkövoimajärjestelmien yhteydessä.

Attention Ce dispositif a été conçu pour fonctionner avec des systèmes d'alimentation TN.

Warnung Das Gerät ist für die Verwendung mit TN-Stromsystemen ausgelegt.

Avvertenza Il dispositivo è stato progettato per l'uso con sistemi di alimentazione TN.

Advarsel Utstyret er utfomet til bruk med TN-strømsystemer.

Aviso O dispositivo foi criado para operar com sistemas de corrente TN.

¡Advertencia! El equipo está diseñado para trabajar con sistemas de alimentación tipo TN.

Warning! Enheten är konstruerad för användning tillsammans med elkraftssystem av TN-typ.

Lightning Activity Warning



Warning Do not work on the system or connect or disconnect cables during periods of lightning activity.

Waarschuwing Tijdens onweer dat gepaard gaat met bliksem, dient u niet aan het systeem te werken of kabels aan te sluiten of te ontkoppelen.

Varoitus Älä työskentele järjestelmän parissa äläkä yhdistä tai irrota kaapeleita ukkosilmalla.

Attention Ne pas travailler sur le système ni brancher ou débrancher les câbles pendant un orage.

Warnung Arbeiten Sie nicht am System und schließen Sie keine Kabel an bzw. trennen Sie keine ab, wenn es gewittert.

Avvertenza Non lavorare sul sistema o collegare oppure scollegare i cavi durante un temporale con fulmini.

Advarsel Utfør aldri arbeid på systemet, eller koble kabler til eller fra systemet når det tordner eller lyner.

Aviso Não trabalhe no sistema ou ligue e desligue cabos durante períodos de mau tempo (trovoada).

¡Advertencia! No operar el sistema ni conectar o desconectar cables durante el transcurso de descargas eléctricas en la atmósfera.

Warning! Vid åska skall du aldrig utföra arbete på systemet eller ansluta eller koppla loss kablar.

Power Cord Warning



Warning This unit has more than one power cord. To reduce the risk of electric shock, disconnect the three to five power supply cords before servicing the unit.

Waarschuwing Dit toestel heeft meer dan één netsnoer. Om het risico van een elektrische schok te verminderen, dient u de stekkers van de drie à vijf netsnoeren uit het stopcontact te halen voordat u het toestel een servicebeurt geeft.

Varoitus Tässä yksikössä on useampi kuin yksi liitäntäjohdin. Irrota virtalähteestä tulevat kolmesta viiteen johdinta ennen laitteen huoltamista, jotta vältät sähköiskun vaaran.

Attention Cet appareil est muni de plusieurs cordons d'alimentation. Afin de réduire le risque d'électrocution, débrancher les trois à cinq cordons d'alimentation avant de procéder à l'entretien ou au dépannage de l'appareil.

Warnung Diese Einheit hat mehr als ein Netzkabel. Zur Verringerung der Stromschlaggefahr trennen Sie die drei bis fünf Netzgerätekabel ab, bevor Sie die Einheit warten.

Avvertenza Questo apparecchio ha più di un cavo di alimentazione (da tre a cinque). Per ridurre il rischio di scosse elettriche, prima di procedere alla manutenzione dell'apparecchio scollegare tutti i cavi di alimentazione.

Advarsel Denne enheten har mer enn én strømledning. Kople fra de tre til fem strømledningene før du vedlikeholder enheten, slik at du reduserer faren for elektrisk støt.

Aviso Esta unidade tem mais de um cabo de alimentação. Para reduzir o risco de choque eléctrico, desligue os três a cinco cabos de alimentação antes de efectuar reparações na unidade.

Advertencia Esta unidad posee más de un cable de alimentación. Para reducir el riesgo de descarga eléctrica, desenchufar los tres (o cuatro o cinco) cables antes de proceder al mantenimiento de la unidad.

Warning! Denna enhet har mer än en nätsladd. För att minska risken för elektriska stötter skall de tre till fem nätsladdarna dras ur innan du utför underhållsarbete på enheten.

Restricted Area Warning



Warning This unit is intended for installation in restricted access areas. A restricted access area is where access can only be gained by service personnel through the use of a special tool, lock and key, or other means of security, and is controlled by the authority responsible for the location.

Waarschuwing Dit toestel is bedoeld voor installatie op plaatsen met beperkte toegang. Een plaats met beperkte toegang is een plaats waar toegang slechts door servicepersoneel verkregen kan worden door middel van een speciaal instrument, een slot en sleutel, of een ander veiligheidsmiddel, en welke beheerd wordt door de overheidsinstantie die verantwoordelijk is voor de locatie.

Varoitus Tämä laite on tarkoitettu asennettavaksi paikkaan, johon pääsy on rajoitettua. Paikka, johon pääsy on rajoitettua, tarkoittaa paikkaa, johon vain huoltohenkilöstö pääsee jonkin erikoistyökalun, lukkoon sopivan avaimen tai jonkin muun turvalaitteen avulla ja joka on paikasta vastuussa olevien toimivaltaisten henkilöiden valvoma.

Attention Cet appareil est à installer dans des zones d'accès réservé. Ces dernières sont des zones auxquelles seul le personnel de service peut accéder en utilisant un outil spécial, un mécanisme de verrouillage et une clé, ou tout autre moyen de sécurité. L'accès aux zones de sécurité est sous le contrôle de l'autorité responsable de l'emplacement.

Warnung Diese Einheit ist zur Installation in Bereichen mit beschränktem Zutritt vorgesehen. Ein Bereich mit beschränktem Zutritt ist ein Bereich, zu dem nur Wartungspersonal mit einem Spezialwerkzeugs, Schloß und Schlüssel oder anderer Sicherheitsvorkehrungen Zugang hat, und der von dem für die Anlage zuständigen Gremium kontrolliert wird.

Avvertenza Questa unità deve essere installata in un'area ad accesso limitato. Un'area ad accesso limitato è un'area accessibile solo a personale di assistenza tramite un'attrezzo speciale, lucchetto, o altri dispositivi di sicurezza, ed è controllata dall'autorità responsabile della zona.

Advarsel Denne enheten er laget for installasjon i områder med begrenset adgang. Et område med begrenset adgang gir kun adgang til servicepersonale som bruker et spesielt verktøy, lås og nøkkel, eller en annen sikkerhetsanordning, og det kontrolleres av den autoriteten som er ansvarlig for området.

Aviso Esta unidade foi concebida para instalação em áreas de acesso restrito. Uma área de acesso restrito é uma área à qual apenas tem acesso o pessoal de serviço autorizado, que possua uma ferramenta, chave e fechadura especial, ou qualquer outra forma de segurança. Esta área é controlada pela autoridade responsável pelo local.

¡Advertencia! Esta unidad ha sido diseñada para instalarse en áreas de acceso restringido. Área de acceso restringido significa un área a la que solamente tiene acceso el personal de servicio mediante la utilización de una herramienta especial, cerradura con llave, o algún otro medio de seguridad, y que está bajo el control de la autoridad responsable del local.

Warning! Denna enhet är avsedd för installation i områden med begränsat tillträde. Ett område med begränsat tillträde får endast tillträdas av servicepersonal med ett speciellt verktyg, lås och nyckel, eller annan säkerhetsanordning, och kontrolleras av den auktoritet som ansvarar för området.

Chassis Warning—Rack-Mounting and Servicing



Warning To prevent bodily injury when mounting or servicing this unit in a rack, you must take special precautions to ensure that the system remains stable. The following guidelines are provided to ensure your safety:

- This unit should be mounted at the bottom of the rack if it is the only unit in the rack.
- When mounting this unit in a partially filled rack, load the rack from the bottom to the top with the heaviest component at the bottom of the rack.
- If the rack is provided with stabilizing devices, install the stabilizers before mounting or servicing the unit in the rack.

Waarschuwing Om lichamelijk letsel te voorkomen wanneer u dit toestel in een rek monteert of het daar een servicebeurt geeft, moet u speciale voorzorgsmaatregelen nemen om ervoor te zorgen dat het toestel stabiel blijft. De onderstaande richtlijnen worden verstrekt om uw veiligheid te verzekeren:

- Dit toestel dient onderaan in het rek gemonteerd te worden als het toestel het enige in het rek is.
- Wanneer u dit toestel in een gedeeltelijk gevuld rek monteert, dient u het rek van onderen naar boven te laden met het zwaarste onderdeel onderaan in het rek.
- Als het rek voorzien is van stabiliseringshulpmiddelen, dient u de stabilisatoren te monteren voordat u het toestel in het rek monteert of het daar een servicebeurt geeft.

Varoitus Kun laite asetetaan telineeseen tai huolletaan sen ollessa telineessä, on noudatettava erityisiä varotoimia järjestelmän vakavuuden säilyttämiseksi, jotta vältetään loukkaantumiselta. Noudata seuraavia turvallisuusohjeita:

- Jos telineessä ei ole muita laitteita, aseta laite telineen alaosaan.
- Jos laite asetetaan osaksi täytettyyn telineeseen, aloita kuormittaminen sen alaosaista kaikkein raskaimmalla esineellä ja siirry sitten sen yläosaan.
- Jos telinettä varten on vakaimet, asenna ne ennen laitteen asettamista telineeseen tai sen huoltamista siinä.

Attention Pour éviter toute blessure corporelle pendant les opérations de montage ou de réparation de cette unité en casier, il convient de prendre des précautions spéciales afin de maintenir la stabilité du système. Les directives ci-dessous sont destinées à assurer la protection du personnel :

- Si cette unité constitue la seule unité montée en casier, elle doit être placée dans le bas.

- Si cette unité est montée dans un casier partiellement rempli, charger le casier de bas en haut en plaçant l'élément le plus lourd dans le bas.
- Si le casier est équipé de dispositifs stabilisateurs, installer les stabilisateurs avant de monter ou de réparer l'unité en casier.

Warnung Zur Vermeidung von Körperverletzung beim Anbringen oder Warten dieser Einheit in einem Gestell müssen Sie besondere Vorkehrungen treffen, um sicherzustellen, daß das System stabil bleibt. Die folgenden Richtlinien sollen zur Gewährleistung Ihrer Sicherheit dienen:

- Wenn diese Einheit die einzige im Gestell ist, sollte sie unten im Gestell angebracht werden.
- Bei Anbringung dieser Einheit in einem zum Teil gefüllten Gestell ist das Gestell von unten nach oben zu laden, wobei das schwerste Bauteil unten im Gestell anzubringen ist.
- Wird das Gestell mit Stabilisierungszubehör geliefert, sind zuerst die Stabilisatoren zu installieren, bevor Sie die Einheit im Gestell anbringen oder sie warten.

Avvertenza Per evitare infortuni fisici durante il montaggio o la manutenzione di questa unità in un supporto, occorre osservare speciali precauzioni per garantire che il sistema rimanga stabile. Le seguenti direttive vengono fornite per garantire la sicurezza personale:

- Questa unità deve venire montata sul fondo del supporto, se si tratta dell'unica unità da montare nel supporto.
- Quando questa unità viene montata in un supporto parzialmente pieno, caricare il supporto dal basso all'alto, con il componente più pesante sistemato sul fondo del supporto.
- Se il supporto è dotato di dispositivi stabilizzanti, installare tali dispositivi prima di montare o di procedere alla manutenzione dell'unità nel supporto.

Advarsel Unngå fysiske skader under montering eller reparasjonsarbeid på denne enheten når den befinner seg i et kabinett. Vær nøye med at systemet er stabilt. Følgende retningslinjer er gitt for å verne om sikkerheten:

- Denne enheten bør monteres nederst i kabinettet hvis dette er den eneste enheten i kabinettet.
- Ved montering av denne enheten i et kabinett som er delvis fylt, skal kabinettet lastes fra bunnen og opp med den tyngste komponenten nederst i kabinettet.
- Hvis kabinettet er utstyrt med stabiliseringsutstyr, skal stabilisatorene installeres før montering eller utføring av reparasjonsarbeid på enheten i kabinettet.

Aviso Para se prevenir contra danos corporais ao montar ou reparar esta unidade numa estante, deverá tomar precauções especiais para se certificar de que o sistema possui um suporte estável. As seguintes directrizes ajudá-lo-ão a efectuar o seu trabalho com segurança:

- Esta unidade deverá ser montada na parte inferior da estante, caso seja esta a única unidade a ser montada.
- Ao montar esta unidade numa estante parcialmente ocupada, coloque os itens mais pesados na parte inferior da estante, arrumando-os de baixo para cima.
- Se a estante possuir um dispositivo de estabilização, instale-o antes de montar ou reparar a unidade.

¡Advertencia! Para evitar lesiones durante el montaje de este equipo sobre un bastidor, o posteriormente durante su mantenimiento, se debe poner mucho cuidado en que el sistema quede bien estable. Para garantizar su seguridad, proceda según las siguientes instrucciones:

- Colocar el equipo en la parte inferior del bastidor, cuando sea la única unidad en el mismo.

- Cuando este equipo se vaya a instalar en un bastidor parcialmente ocupado, comenzar la instalación desde la parte inferior hacia la superior colocando el equipo más pesado en la parte inferior.
- Si el bastidor dispone de dispositivos estabilizadores, instalar éstos antes de montar o proceder al mantenimiento del equipo instalado en el bastidor.

Warning! För att undvika kroppsskada när du installerar eller utför underhållsarbete på denna enhet på en ställning måste du vidta särskilda försiktighetsåtgärder för att försäkra dig om att systemet står stadigt. Följande riktlinjer ges för att trygga din säkerhet:

- Om denna enhet är den enda enheten på ställningen skall den installeras längst ned på ställningen.
- Om denna enhet installeras på en delvis fylld ställning skall ställningen fyllas nedifrån och upp, med de tyngsta enheterna längst ned på ställningen.
- Om ställningen är försedd med stabiliseringsdon skall dessa monteras fast innan enheten installeras eller underhålls på ställningen.

Product Disposal Warning



Warning Ultimate disposal of this product should be handled according to all national laws and regulations.

Waarschuwing Dit produkt dient volgens alle landelijke wetten en voorschriften te worden afgedankt.

Varoitus Tämän tuotteen lopullisesta hävittämisestä tulee huolehtia kaikkia valtakunnallisia lakeja ja säännöksiä noudattaen.

Attention La mise au rebut définitive de ce produit doit être effectuée conformément à toutes les lois et réglementations en vigueur.

Warnung Dieses Produkt muß den geltenden Gesetzen und Vorschriften entsprechend entsorgt werden.

Avvertenza L'eliminazione finale di questo prodotto deve essere eseguita osservando le normative italiane vigenti in materia.

Advarsel Endelig disponering av dette produktet må skje i henhold til nasjonale lover og forskrifter.

Aviso A descartagem final deste produto deverá ser efectuada de acordo com os regulamentos e a legislação nacional.

¡Advertencia! El desecho final de este producto debe realizarse según todas las leyes y regulaciones nacionales.

Warning! Slutlig kassering av denna produkt bör skötas i enlighet med landets alla lagar och föreskrifter.

Circuit Breaker (15A) Warning



Warning This product relies on the building's installation for short-circuit (overcurrent) protection. Ensure that a fuse or circuit breaker no larger than 120 VAC, 15A U.S. (240 VAC, 10A international) is used on the phase conductors (all current-carrying conductors).

Waarschuwing Dit produkt is afhankelijk van de installatie van het gebouw voor kortsluit-(overstroom)beveiliging. Controleer of er een zekering of stroomverbreker van niet meer dan 120 Volt wisselstroom, 15 A voor de V.S. (240 Volt wisselstroom, 10 A internationaal) gebruikt wordt op de fasegeleiders (alle geleiders die stroom voeren).

Varoitus Tämä tuote on riippuvainen rakennukseen asennetusta oikosulkusuojauksesta (ylivirtasuojauksesta). Varmista, että vaihevirtajohtimissa (kaikissa virroitetuissa johtimissa) käytetään Yhdysvalloissa alle 120 voltin, 15 ampeerin ja monissa muissa maissa 240 voltin, 10 ampeerin sulaketta tai suojakytintä.

Attention Pour ce qui est de la protection contre les courts-circuits (surtension), ce produit dépend de l'installation électrique du local. Vérifier qu'un fusible ou qu'un disjoncteur de 120 V alt., 15 A U.S. maximum (240 V alt., 10 A international) est utilisé sur les conducteurs de phase (conducteurs de charge).

Warnung Dieses Produkt ist darauf angewiesen, daß im Gebäude ein Kurzschluß- bzw. Überstromschutz installiert ist. Stellen Sie sicher, daß eine Sicherung oder ein Unterbrecher von nicht mehr als 240 V Wechselstrom, 10 A (bzw. in den USA 120 V Wechselstrom, 15 A) an den Phasenleitern (allen stromführenden Leitern) verwendet wird.

Avvertenza Questo prodotto dipende dall'installazione dell'edificio per quanto riguarda la protezione contro cortocircuiti (sovracorrente). Verificare che un fusibile o interruttore automatico, non superiore a 120 VCA, 15 A U.S. (240 VCA, 10 A internazionale) sia stato usato nei fili di fase (tutti i conduttori portatori di corrente).

Advarsel Dette produktet er avhengig av bygningens installasjoner av kortslutningsbeskyttelse (overstrøm). Kontroller at det brukes en sikring eller strømbryter som ikke er større enn 120 VAC, 15 A (USA) (240 VAC, 10 A internasjonalt) på faselederne (alle strømførende ledere).

Aviso Este produto depende das instalações existentes para protecção contra curto-circuito (sobrecarga). Assegure-se de que um fusível ou disjuntor não superior a 240 VAC, 10A é utilizado nos condutores de fase (todos os condutores de transporte de corrente).

¡Advertencia! Este equipo utiliza el sistema de protección contra cortocircuitos (o sobrecorrientes) del propio edificio. Asegurarse de que se utiliza un fusible o interruptor automático de no más de 240 voltios en corriente alterna (VAC), 10 amperios del estándar internacional (120 VAC, 15 amperios del estándar USA) en los hilos de fase (todos aquellos portadores de corriente).

Warning! Denna produkt är beroende av i byggnaden installerat kortslutningsskydd (överströmsskydd). Kontrollera att säkring eller överspänningsskydd används på fasledarna (samtliga strömförande ledare) ¥ för internationellt bruk max. 240 V växelström, 10 A (i USA max. 120 V växelström, 15 A).

Power Cabling Warning



Warning Secure all power cabling when installing this unit to avoid disturbing field-wiring connections.

Waarschuwing Zet alle stroomkabels vast wanneer dit toestel wordt geïnstalleerd om te voorkomen dat de verbindingen van de veldbedrading worden verstoord.

Varoitus Kiinnitä kaikki voimakaapelit tiukkaan tätä laitetta asentaessasi, jotta vältät kentän johdinkytentöjen vioittumista.

Attention Lors de l'installation de cet appareil, fixer tous les câbles d'alimentation pour éviter de provoquer des perturbations aux raccordements des câblages propres au site.

Warnung Bei der Installation dieser Einheit die Netzverkabelung befestigen, um die Störung von Feldkabelanschlüssen zu vermeiden.

Avvertenza In fase di installazione dell'unità, assicurare tutti i cablaggi di alimentazione per evitare di alterare i collegamenti degli avvolgimenti di campo.

Advarsel Når denne enheten installeres, må alle kraftledninger sikres for å unngå at feltkabelkoblingene forstyrres.

Aviso Para evitar problemas com as ligações de rede de campanha, prenda todos os cabos de corrente quando instalar esta unidade.

¡Advertencia! Sujetar todo el cableado de alimentación cuando se instale este equipo para evitar que se mezcle con las conexiones del cableado "in situ".

Warning! Fäst allt starkströmskablage vid installation av denna enhet så att fältkopplingen inte rubbas.

Cisco Connection Online

Cisco Connection Online (CCO) is Cisco Systems' primary, real-time support channel. Maintenance customers and partners can self-register on CCO to obtain additional information and services.

Available 24 hours a day, 7 days a week, CCO provides a wealth of standard and value-added services to Cisco's customers and business partners. CCO services include product information, product documentation, software updates, release notes, technical tips, the Bug Navigator, configuration notes, brochures, descriptions of service offerings, and download access to public and authorized files.

CCO serves a wide variety of users through two interfaces that are updated and enhanced simultaneously: a character-based version and a multimedia version that resides on the World Wide Web (WWW). The character-based CCO supports Zmodem, Kermit, Xmodem, FTP, and Internet e-mail, and it is excellent for quick access to information over lower bandwidths. The WWW version of CCO provides richly formatted documents with photographs, figures, graphics, and video, as well as hyperlinks to related information.

You can access CCO in the following ways:

- WWW: <http://www.cisco.com>
- WWW: <http://www-europe.cisco.com>
- WWW: <http://www-china.cisco.com>
- Telnet: cco.cisco.com

- Modem: From North America, 408 526-8070; from Europe, 33 1 64 46 40 82. Use the following terminal settings: VT100 emulation; databits: 8; parity: none; stop bits: 1; and connection rates up to 28.8 kbps.

For a copy of CCO's Frequently Asked Questions (FAQ), contact cco-help@cisco.com. For additional information, contact cco-team@cisco.com.

Note If you are a network administrator and need personal technical assistance with a Cisco product that is under warranty or covered by a maintenance contract, contact Cisco's Technical Assistance Center (TAC) at 800 553-2447, 408 526-7209, or tac@cisco.com. To obtain general information about Cisco Systems, Cisco products, or upgrades, contact 800 553-6387, 408 526-7208, or cs-rep@cisco.com.

This document is to be used in conjunction with the *Cisco AccessPath-LS3 Integrated Access System Hardware Installation and Configuration Guide* publication.

AccessPath, AtmDirector, Cache Director System, CD-PAC, Centri, Centri Bronze, Centri Gold, Centri Security Manager, Centri Silver, the Cisco Capital logo, Cisco IOS, the Cisco IOS logo, *CiscoLink*, the Cisco Powered Network logo, the Cisco Press logo, ClickStart, ControlStream, Fast Step, FragmentFree, IGX, JumpStart, Kernel Proxy, LAN²LAN Enterprise, LAN²LAN Remote Office, MICA, Natural Network Viewer, NetBeyond, Netsys Technologies, *Packet*, PIX, Point and Click Internetworking, Policy Builder, RouteStream, Secure Script, SMARTnet, StrataSphere, StrataSphere BILLder, StrataSphere Connection Manager, StrataSphere Modeler, StrataSphere Optimizer, Stratum, StreamView, SwitchProbe, *The Cell*, TokenSwitch, TrafficDirector, VirtualStream, VlanDirector, Workgroup Director, Workgroup Stack, and XCI are trademarks; The Network Works. No Excuses. is a service mark; and BPX, Catalyst, Cisco, Cisco Systems, the Cisco Systems logo, EtherChannel, FastHub, FastPacket, ForeSight, IPX, LightStream, OptiClass, Phase/IP, StrataCom, and StrataView Plus are registered trademarks of Cisco Systems, Inc. in the U.S. and certain other countries. All other trademarks mentioned in this document are the property of their respective owners.

Copyright © 1997, Cisco Systems, Inc.
All rights reserved. Printed in USA.
9711R