



T1/PRI Synchronization to Master Timing Link

T1/PRI synchronization is a dynamic process in the system that varies according to the Master Timing Link selection that you enter under the Maintenance menu. Synchronization can be maintained by internal, incoming and external references.

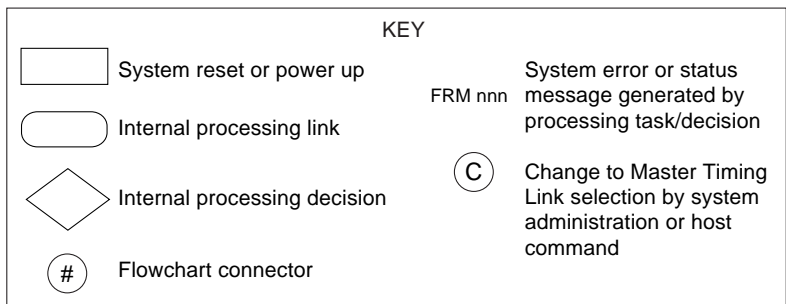
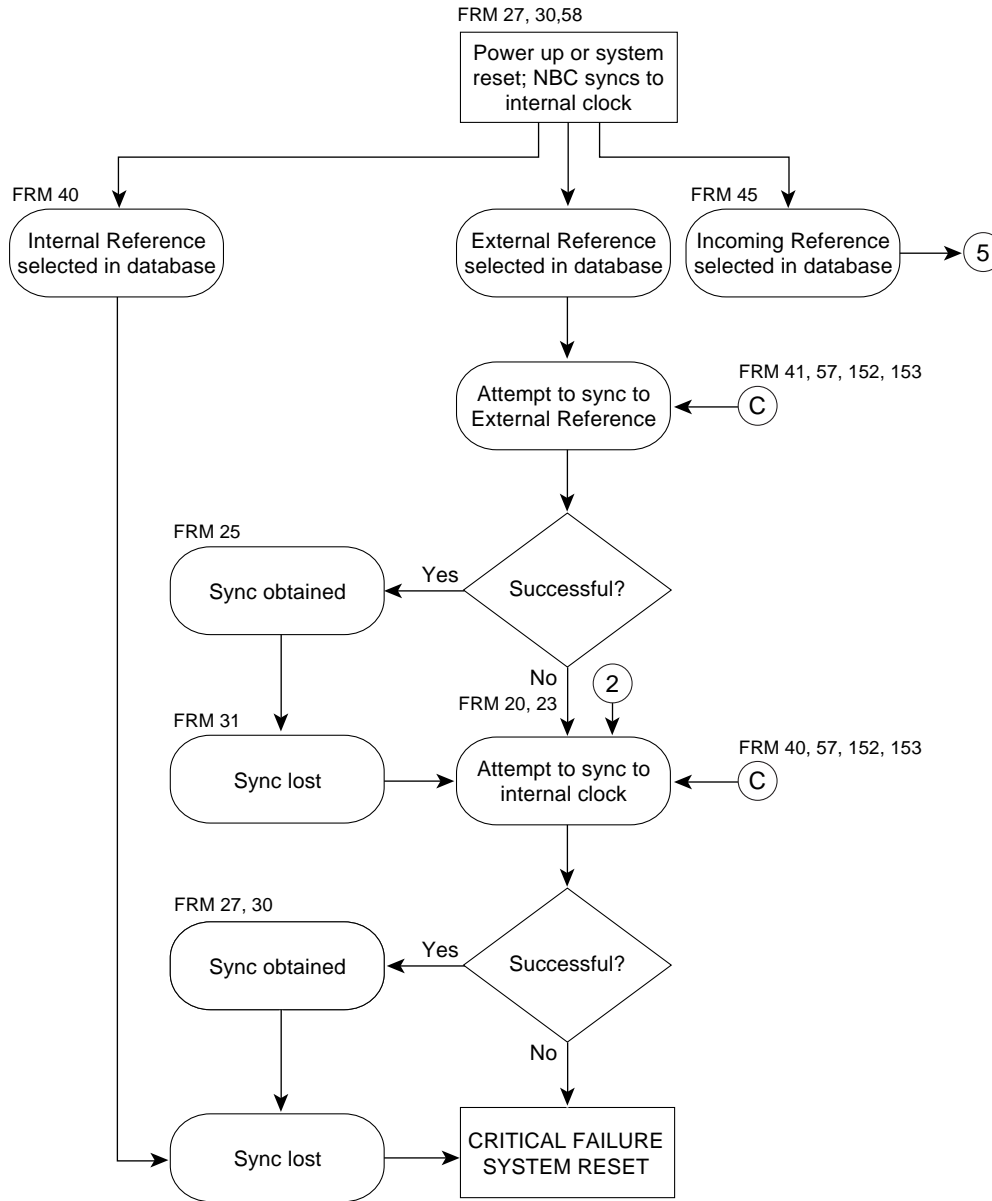
The system always defaults to the internal 32-MHz reference signal on power-up, reset or when attempts to synchronize to incoming or external sources have failed. Error and status messages are generated by system software as the synchronization process moves through its tasks.

T1/PRI Synchronization Flowchart

Figure B-1 shows the basic sequence of tasks performed for T1/PRI synchronization to internal, incoming and external references. Administrators will find the flowchart to be helpful when trying to isolate problems caused when T1/PRI synchronization is not achieved.

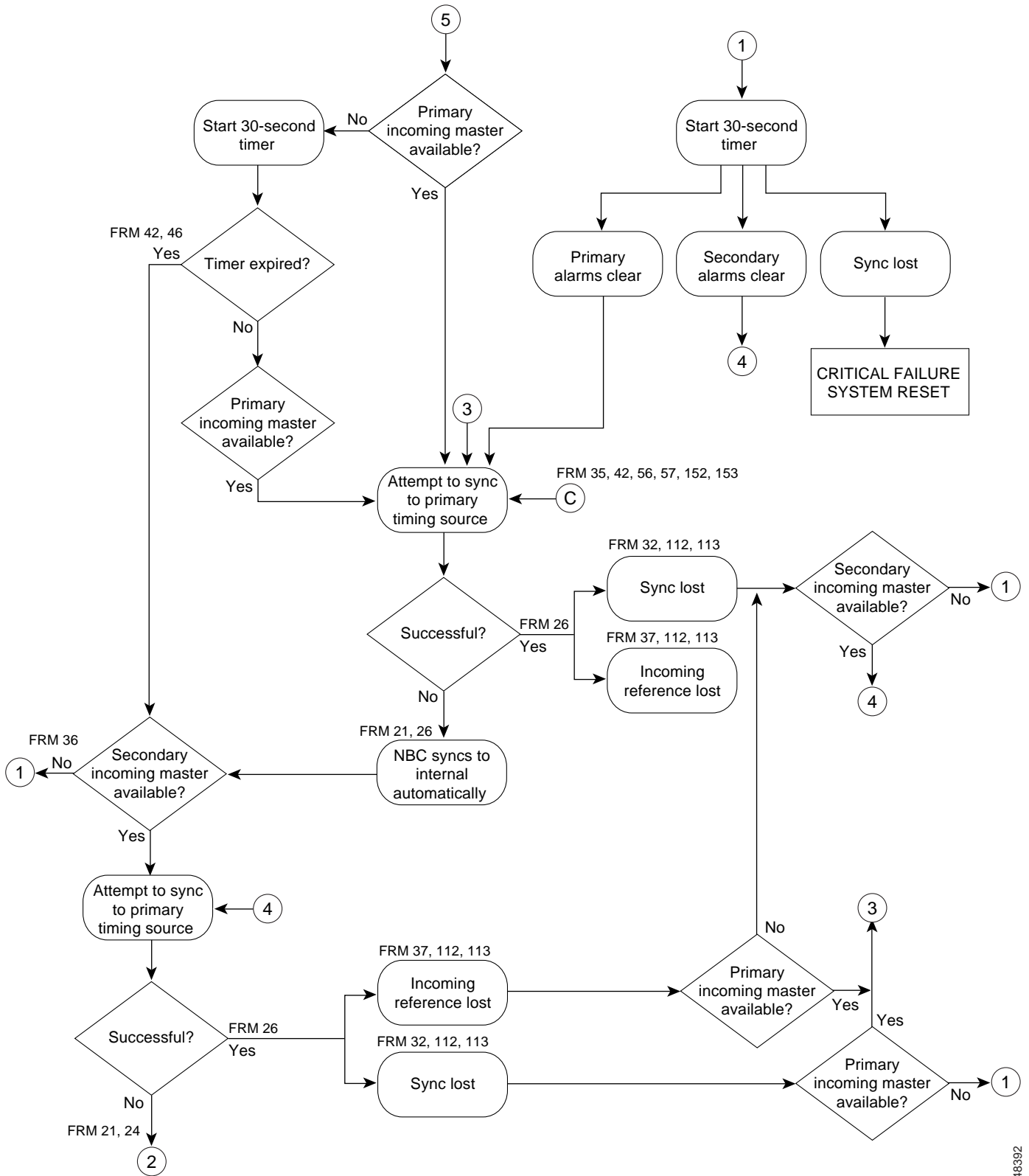
The chart includes indications as to which error or status messages are output as tasks are being executed. Cross-reference is made to the message in the form “FRM xxx, yyy, zzz...” where xxx, yyy, zzz etc. refer to the number assigned to each FRM message. Definitions for each FRM message can be found in *Cisco VCO/4K System Messages*.

Figure B-1 T1/PRI Synchronization



48391

Figure B-2 T1/PRI Synchronization (continued)



48392

