



Running Non-English Editions of SDM on English-Language Operating Systems

Non-English editions of Cisco Router and Security Device Manager (SDM) will not launch on a PC that is running an English-language version of Microsoft Windows. These instructions explain how to set up a PC so that you can use it to run non-English editions of SDM on PCs that run English-language versions of Microsoft Windows 2000 Professional, or Microsoft Windows XP.

If the operating system on the PC is in the same language as the edition of SDM you want to use, you do not need to change PC settings. For example, if the PC runs Chinese Microsoft Windows, it can run the Chinese edition of SDM.

If the PC's settings are already compatible with the non-English edition that you are using, no changes need to be made.

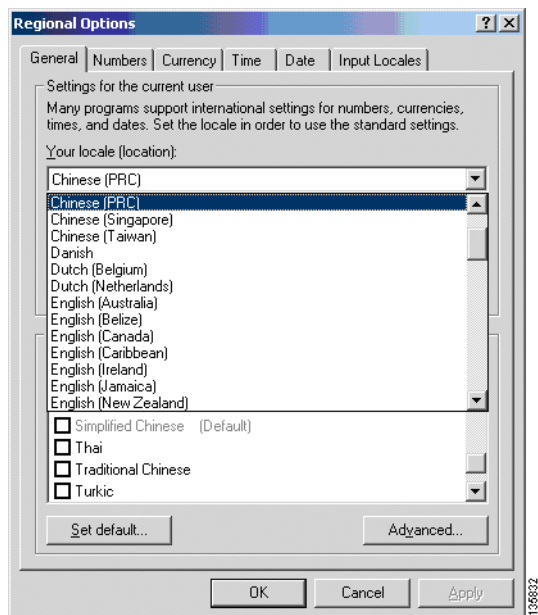
This document should be used with the documents listed in the [Related Documentation](#) section.

Setting Up a PC to Run Non-English Editions of SDM

Complete the following steps to set up the PC.

-
- Step 1** Go to **Start > Settings > Control Panel > Regional Options > General** to display the dialog box shown in [Figure 1 on page 2](#)

Figure 1 *Regional Options Dialog*



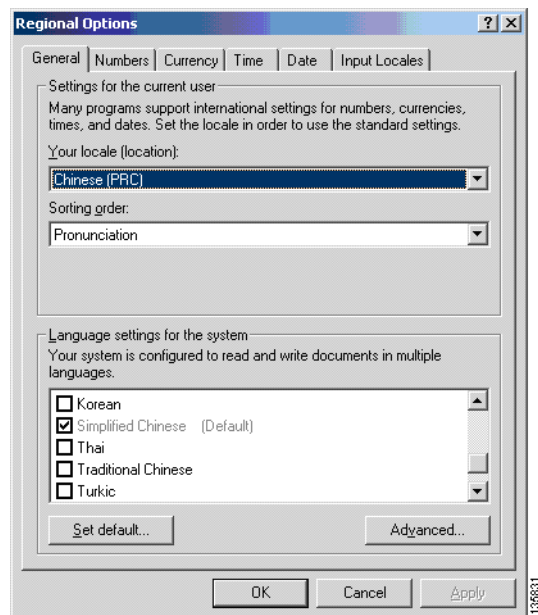
Step 2 In the dialog, select the locale for the version of SDM that you want to run. [Figure 1](#) shows a locale setting for Chinese. You must select one of the following locales:

- Chinese (PRC)
- Japanese
- Spanish (Spain)
- French (France)
- Italian (Italy)
- German (Germany)

If you select Chinese (PRC), the Sorting order field is displayed. leave the Sorting order field set to Pronunciation.

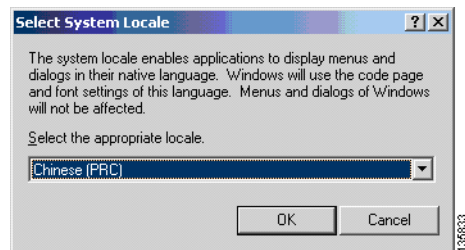
Step 3 In the Language settings for the system area, choose a language setting for the locale that you specified. [Figure 2](#) shows a language setting of Simplified Chinese, which is the required setting if you chose Chinese (PRC) for locale.

Figure 2 Language Settings for the System



- Step 4** Click the **Set Default** button, and choose the same locale that you chose in Step 2 from the list in the Select System Locale window. See [Figure 3](#). This step sets the PC's default locale and ensures that the PC will use this locale when it boots.

Figure 3 Select System Locale Window



- Step 5** Click **Apply** in the Regional Settings dialog. A message box is displayed informing you that the resource is already on the system, and that asks you if you want to use it. Click **Yes**.
- Step 6** Reboot when the system prompts you to do so.

After you reboot, the system is set to the default locale you selected. You can now run the edition of SDM for that locale.

Related Documentation

The following documents provide other information about SDM. These documents are available on www.cisco.com/go/sdm.

- *Cisco Security Device Manager Q&A*. Click **Product Literature**, and then click **Q&A**.

- *Downloading and Installing Cisco Security Device Manager (SDM)*. Click **Install and Upgrade** in the Technical Documentation and Tools box, and then click **Install and Upgrade Guides**.
- *Switching from Cisco Router Web Setup Tool (CRWS) to Cisco SDM on Cisco 83X Series Routers*. Click **Install and Upgrade** in the Technical Documentation and Tools box, and then click **Install and Upgrade Guides**.
- Release Notes for Cisco Router and Security Device Manager. Click **General Information** in the Technical Documentation and Tools box, and then click **Release Notes**.
- A number of application notes are available by clicking **Reference Guides** in the Technical Documentation and Tools box, and then clicking **Technical References**