

**Cisco Video Surveillance Stream Manager Video Viewing PC Client Software
Quick Start, Installation and Operations Guide**

Corporate Headquarters
Cisco Systems, Inc.
170 West Tasman Drive
San Jose, CA 95134-1706
USA <http://www.cisco.com>
Tel: 408 526-4000
800 553-NETS (6387)
Fax: 408 526-4100

THE SPECIFICATIONS AND INFORMATION REGARDING THE PRODUCTS IN THIS MANUAL ARE SUBJECT TO CHANGE WITHOUT NOTICE. ALL STATEMENTS, INFORMATION, AND RECOMMENDATIONS IN THIS MANUAL ARE BELIEVED TO BE ACCURATE BUT ARE PRESENTED WITHOUT WARRANTY OF ANY KIND, EXPRESS OR IMPLIED. USERS MUST TAKE FULL RESPONSIBILITY FOR THEIR APPLICATION OF ANY PRODUCTS.

THE SOFTWARE LICENSE AND LIMITED WARRANTY FOR THE ACCOMPANYING PRODUCT ARE SET FORTH IN THE INFORMATION PACKET THAT SHIPPED WITH THE PRODUCT AND ARE INCORPORATED HEREIN BY THIS REFERENCE. IF YOU ARE UNABLE TO LOCATE THE SOFTWARE LICENSE OR LIMITED WARRANTY, CONTACT YOUR CISCO REPRESENTATIVE FOR A COPY.

NOTWITHSTANDING ANY OTHER WARRANTY HEREIN, ALL DOCUMENT FILES AND SOFTWARE OF THESE SUPPLIERS ARE PROVIDED "AS IS" WITH ALL FAULTS. CISCO DISCLAIMS ALL WARRANTIES, EXPRESSED OR IMPLIED, INCLUDING, WITHOUT LIMITATION, THOSE OF MERCHANTABILITY, FITNESS FOR A PARTICULAR PURPOSE AND NON-INFRINGEMENT OR ARISING FROM A COURSE OF DEALING, USAGE, OR TRADE PRACTICE.

IN NO EVENT SHALL CISCO OR ITS SUPPLIERS BE LIABLE FOR ANY INDIRECT, SPECIAL, CONSEQUENTIAL, OR INCIDENTAL DAMAGES, INCLUDING, WITHOUT LIMITATION, LOST PROFITS OR LOSS OR DAMAGE TO DATA ARISING OUT OF THE USE OR INABILITY TO USE THIS MANUAL, EVEN IF CISCO OR ITS SUPPLIERS HAVE BEEN ADVISED OF THE POSSIBILITY OF SUCH DAMAGES.

AccessPath, AtmDirector, Browse with Me, CCIP, CCSI, CD-PAC, CiscoLink, the Cisco Powered Network logo, Cisco Systems Networking Academy, the Cisco Systems Networking Academy logo, Cisco Unity, Fast Step, Follow Me Browsing, FormShare, FrameShare, IGX, Internet Quotient, IP/VC, iQ Breakthrough, iQ Expertise, iQ FastTrack, the iQ Logo, iQ Net Readiness Scorecard, MGX, the Networkers logo, ScriptBuilder, ScriptShare, SMARTnet, TransPath, Voice LAN, Wavelength Router, and WebViewer are trademarks of Cisco Systems, Inc.; Changing the Way We Work, Live, Play, and Learn, and Discover All That's Possible are service marks of Cisco Systems, Inc.; and Aironet, ASIST, BPX, Catalyst, CCDA, CCDP, CCIE, CCNA, CCNP, Cisco, the Cisco Certified Internetwork Expert logo, Cisco IOS, the Cisco IOS logo, Cisco Press, Cisco Systems, Cisco Systems Capital, the Cisco Systems logo, Empowering the Internet Generation, Enterprise/Solver, EtherChannel, EtherSwitch, FastHub, FastSwitch, GigaStack, IOS, IP/TV, LightStream, MICA, Network Registrar, Packet, PIX, Post-Routing, Pre-Routing, RateMUX, Registrar, SlideCast, StrataView Plus, Stratm, SwitchProbe, TeleRouter, and VCO are registered trademarks of Cisco Systems, Inc. and/or its affiliates in the U.S. and certain other countries.

Windows®, XP®, DirectPlay® and DirectDraw® are registered trademarks of Microsoft Corporation. Intel® and Pentium® are registered trademarks of Intel Corporation. Trademarked names are used throughout this manual. Rather than place a symbol at each occurrence, trademarked names are designated with initial capitalization. Inclusion or exclusion is not a judgment on the validity or legal status of the term.

All other trademarks mentioned in this document or Web site are the property of their respective owners. The use of the word partner does not imply a partnership relationship between Cisco and any other company. (0110R)

Cisco Video Surveillance Stream Manager Video Viewing PC Client Software Guide
Copyright © 2006-2007, Cisco Systems, Inc. All rights reserved.



| | |
|--|----------|
| Introduction..... | 1 |
| ABOUT THIS GUIDE | 1 |
| FEATURES | 1 |
| MINIMUM SYSTEM REQUIREMENTS | 1 |
| NETWORK CONFIGURATION..... | 1 |
| | |
| Software Installation..... | 2 |
| | |
| Using Stream Manager Video Viewing PC Client..... | 3 |
| INITIAL STARTUP | 3 |
| KEY ELEMENTS OF MAIN SCREEN | 3 |
| KEY OPERATOR ACTIVITIES | 4 |
| INTERACTIVE MENU FUNCTIONS | 5 |

Section

1

INTRODUCTION

ABOUT THIS GUIDE

Thank you for purchasing a Cisco Systems software product. This guide is designed to provide you with the necessary information to install and use the software.

FEATURES

- Display and playback at multiple resolutions – CIF, 2CIF, 4CIF and D1 resolutions may be displayed on Stream Manager Video Viewing PC Client.
- Display and playback at multiple frame rates – 3.25, 7.5, 15, or 30 images per second may be displayed on Stream Manager Video Viewing PC Client.
- Instant replay – a single mouse-click allows users to replay video of a live view camera.
- Event log – video data marked for follow-up or review is available via a single mouse-click
- Date, time, Camera search - enables users to quickly search and Playback the imaged database.
- Compatible with all Color and B/W cameras
- Universal camera control protocol - enables connectivity to a wide range of domes
- Built in matrix switch functionality – allows operator to display any composite video input to any monitor connected to the Cisco Systems system.
- Video Export and watermarking – provides ability to export video to CD or DVD with Media player. Watermarking ensures authenticity of video and detection of any video editing.

MINIMUM SYSTEM REQUIREMENTS

| | |
|-------------------------|---------------------------------|
| Computer | 1.5 Ghz (2.3 Ghz recommended) |
| Operating System | Windows XP Pro |
| RAM MB | 512 MB (1024 MB recommended) |
| Hard Drive (free space) | 20 MB |
| Other Drive | CD ROM for initial installation |
| Network Card | 10/100T operation |
| Other | Mouse or other pointing device |

NETWORK CONFIGURATION

Data sent across a network is limited by bus speed, network traffic, network topology and packet size. Minimum 100BaseT is recommended. Use the following guidelines when configuring your network:

- Use the proper cables and connectors: CAT 5 for 100Base-TX (100Mbps) operation.
- Configure the network for the TCP/IP Protocol.

If the network supporting the Cisco Systems Video Surveillance System does not have a DHCP server, you must manually assign an IP address to the PC running Stream Manager Video Viewing PC Client. Consult your network administrator for assistance.

Section

2

SOFTWARE INSTALLATION

1. Close any running programs.
2. Insert the Stream Manager Video Viewing PC Client CD in the CD-ROM drive. The installation program should autorun. If it does not, **Explore** the CD and double-click the **Stream Manager Video Viewing PC Client Setup** icon.
3. When the **Stream Manager Video Viewing PC Client Setup** screen appears, click **Next** to display the copyright notice.
4. Select **Next** to display the **Choose Destination Location** screen. This screen shows the recommended directory for the software.
5. Click **Next** to confirm your intention to install the Stream Manager Video Viewing PC Client software.
6. Select **Close** when installation completes



NOTE: Please visit us at www.cisco.com to register your product and become eligible for various support services and product information updates!

Section

3

USING STREAM MANAGER VIDEO VIEWING PC CLIENT

INITIAL STARTUP

To start the Stream Manager Video Viewing PC Client software, do one of the following:

Double-click the **Stream Manager Video Viewing PC Client** icon on your desktop;

or

Click the **Start** button, then click **Programs**, then click the **Stream Manager Video Viewing PC Client** icon.

When the Stream Manager Video Viewing PC Client application starts, the software searches for all connected Cisco Systems devices for display on the Main Screen.

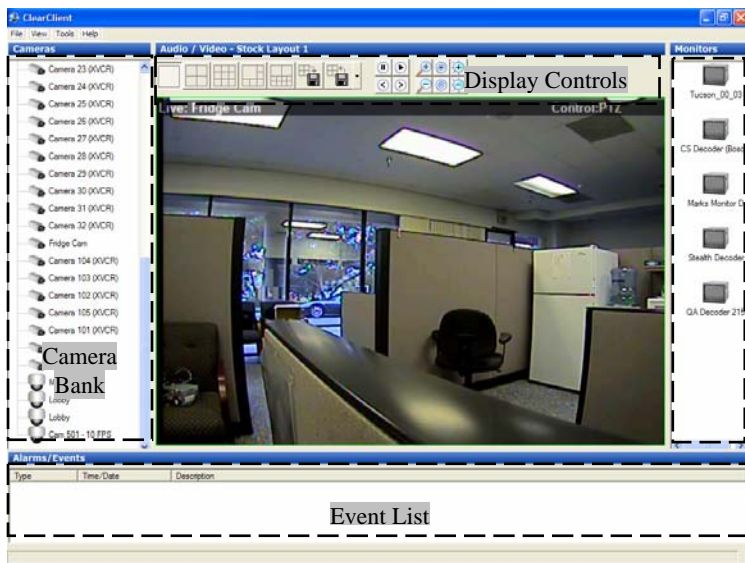


FIGURE 1

Stream Manager Video Viewing PC Client Main Screen

KEY ELEMENTS OF MAIN SCREEN

The Main Screen is broken into several portions to enable complete control of the system's resources.

Camera Bank

The System will poll all equipment attached to the network and display imagers on the left side of the screen. Images from these devices may be viewed by dragging onto the main screen.

Monitor Bank

All monitors attached to the network will be displayed on the right side of the screen. Images can be displayed on any monitor by dragging onto the monitor.

Display Controls

The top-middle section includes icons to assist in configuring the display of live and/or recorded video.

Screen Layout Controls

The Screen layout icons provide intuitive configurations of reviewing any combination of live and/or recorded video.

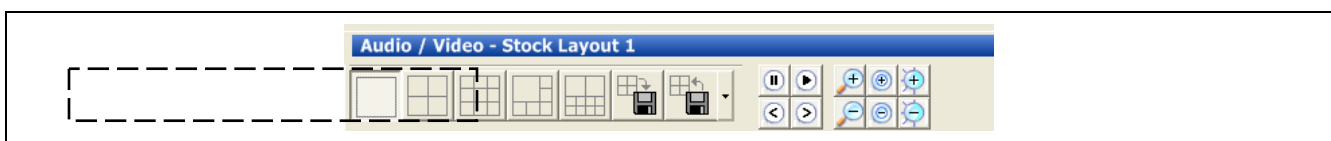


FIGURE 2

Screen Layout controls

Changing layout - The display format can be changed to a wide range of configurations ranging from a single camera display to a 2x8 camera window display. Simply mouse-click on the display format desired.

Saving layout – A layout, together with the specific live or recorded video segments placed into each portion of the layout, can be saved by clicking on the **Save current layout** button.

Load custom layout – A custom layout, created as noted above, can be recalled by clicking on the **Load custom layout** button. When selected, the layout, together with the live and/or stored video inputs will be displayed on the main screen.

Camera Controls

Two sets of icons enable control of record and live video.

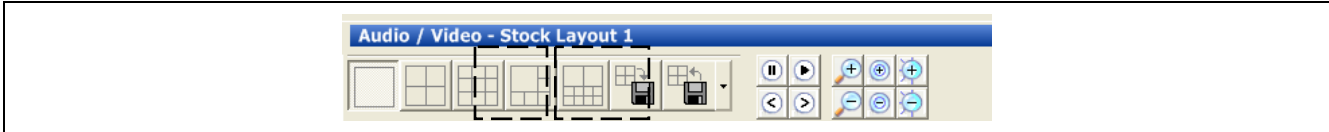


FIGURE 3
Video and Camera Controls

Recorded video control – Playback functions for navigating stored video are available. Available controls include pause, play frame forward and frame back.

Live camera control – These icons enable control of zoom, focus and iris settings on cameras with these functions enabled. Simply click on the adjustment desired to adjust the lens setting.

Event List Controls

Events can be bookmarked for later review and archiving. These events are displayed in the **Event List** window. To review an event, simply drag the event into the main screen.

A screenshot of a window titled "Alarms/Events". It contains a table with three columns: "Type", "Time/Date", and "Description".

| Type | Time/Date | Description |
|----------|------------------|----------------------------------|
| Bookmark | 6/9/2005 1:43 PM | Bookmark registered for camera 2 |
| Bookmark | 6/9/2005 1:43 PM | Bookmark registered for camera 1 |

FIGURE 4
Event Listing

KEY OPERATOR ACTIVITIES

The following topics describe how to use Stream Manager Video Viewing PC Client to perform common video review activities.

View Live Video

- Select the layout desired
- Drag desired cameras from Camera Bank into the Main Screen.

View Recorded Video

- Select the layout desired
- Shift-Drag (hold down the shift key while dragging the camera) desired cameras from Camera Bank into the Main Screen.

Matrix Switch Functions

Any camera may be displayed on the VGA monitor of the PC running Stream Manager Video Viewing PC Client, or on any monitor enabled with a Cisco Systems decoder. All monitors available will be shown on the Monitor Bank. To display a camera on any monitor:

- Drag the camera onto the monitor

INTERACTIVE MENU FUNCTIONS

A key set of functions may be accessed by right clicking on the mouse while in the main screen.



FIGURE 5
Interactive Menu

Toggle Control Mode

The top portion of the main screen provides a status bar showing key status information:

Display mode (Live or Playback)

Camera name

Toggle Control Mode (PTZ or Playback)

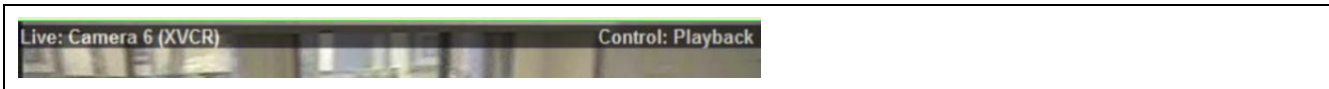


FIGURE 6
Status Information Overlay

The Control Mode can be toggled to enable a mouse drag to either control PTZ or Playback functions. To toggle between these modes do the following:

- Call up the interactive menu by right-clicking on the video
- Select **Toggle Control Mode**

The control indicator on the top-right screen shows PTZ or Playback.

When in Playback Mode, dragging the mouse right or left will move through a 20 MB buffer of video stored on the PC.

When in PTZ mode, dragging the mouse will move a PTZ enabled camera.

Export Video

Call up the interactive menu by right-clicking on the picture to be exported

Select **Export**

The following dialog box will appear to customize the video to be exported.

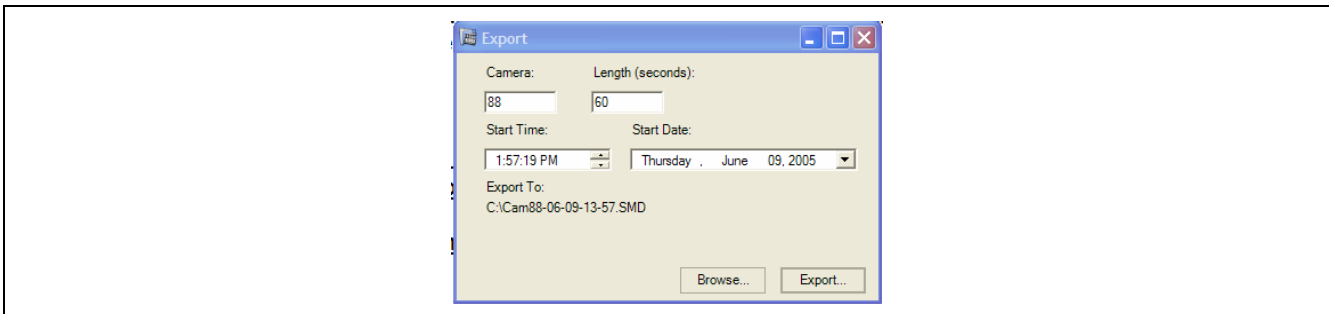


FIGURE 7
Video Export Parameters

Adjust any desired variables and select **Export**

The export feature will download the selected video clip, together with a media player setup file.

Double click on the file **SPNMediaPlayer Install.exe** to install the media player.

Note: The media player needs to be installed only once. Subsequent downloads may be played by double clicking on the video file.

Double click on the video file to review the exported video.

Alarms/Events

A layout may be configured to display live or pre-alarm video upon the occurrence of an Alarm or Event. This arrangement is useful to operators who want to review Pre-alarm video and live video on the same screen. To configure a layout to display alarms/events, do the following:

Select a layout using one of the screen layout icons

Call up the interactive menu by right-clicking on the layout to display an alarm/event

Select **Alarms/Events**

Select **Armed for Alarm Video** or **Armed for Live Video**

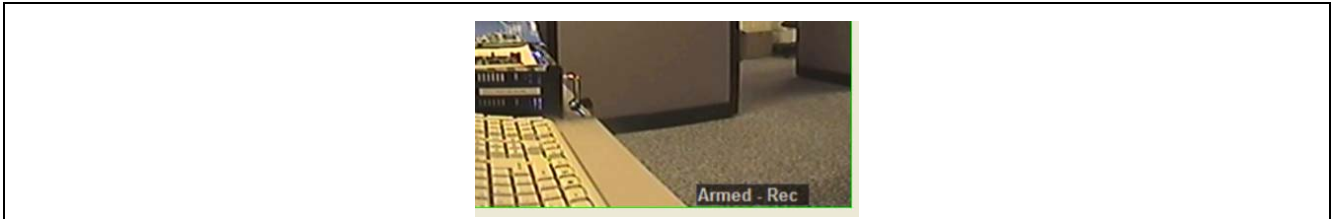


FIGURE 8
Armed Notification Indicator

The bottom-right corner will indicate that the layout is setup to display video upon an alarm event.

In the event of an alarm captured by a Cisco Systems encoder, the following video segments will be displayed:

Armed for Alarm Video – will show recorded video prior to the event.

Armed for Live Video - will show live video of the alarmed camera.

Presets

Presets are a powerful use of cameras enabled with Pan, Tilt and Zoom capabilities.

To program presets, do the following:

Move a PTZ camera to the desired position of the preset

Call up the interactive menu by right-clicking on the display

Select **Program Presets**

Select Preset 1 to 4

To recall a preset, do the following

Call up the interactive menu by right-clicking on the display

Select **Callup Presets**

Select Preset 1 to 4

REVISION HISTORY:

| Manual Number | Date | Comments | |
|--|------|-------------|--|
| Stream Manager Video Viewing PC Client rev-.inst | | 4/16/06 | Initial Conversion to Cisco Doc Format |
| | | OL-10374-01 | |