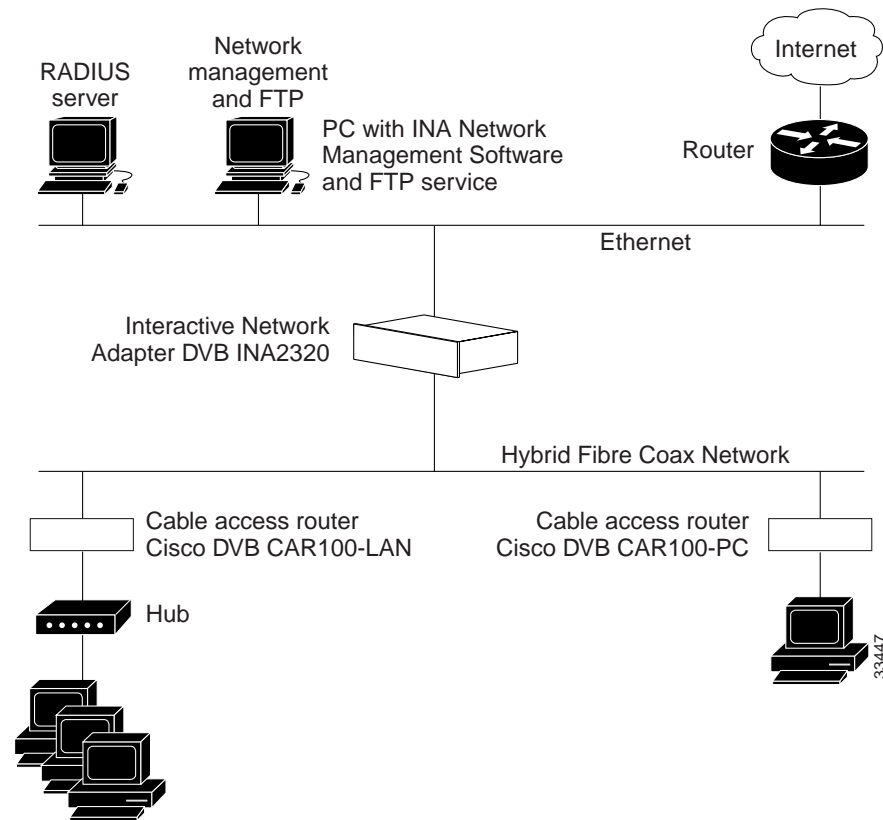




Introduction

The Cisco DVB CAR100 cable access router is a cable modem based on the Digital Video Broadcasting (DVB) standard. It enables bidirectional data communication at bit rates up to 10 Mbps between a Hybrid Fibre Coaxial (HFC) network and an Ethernet network consisting of 1 to 20 PCs. The Cisco DVB CAR100 is typically used to enable broadband Internet access. Figure 1-1 shows a typical cable data system setup.

Figure 1-1 Typical Cable Data System



Two models of the Cisco DVB CAR100 are available:

- CAR100-PC—For connecting a single PC to an HFC network
- CAR100-LAN—For connecting multiple PCs to an HFC network using an Ethernet hub (not included with delivery)



Note

Cisco recommends that you connect no more than 20 PCs to one Cisco DVB CAR100-LAN.



Note

Before upgrading from the DVB CAR100-PC to the CAR100-LAN, make sure you have the necessary number of CAR100-LAN licenses.

The following chapters in this guide are intended to give the cable service provider information on how to install the cable modem, a process typically performed by the subscriber. This guide contains a detailed description of how to configure the cable modem from the service provider site using SNMP and a MIB browser program. All parameters for the cable modem are described in the MIB section of this guide.